

# SUMO3 Rabbit Polyclonal Antibody



CAB3099

---

## Product Information

### Size:

20uL, 50uL, 100uL, 200uL

### Observed MW:

19kDa

### Calculated MW:

11kDa/15kDa

### Applications:

WB IHC IF

### Reactivity:

Human, Mouse, Rat

## Protein Background

This gene encodes a member of the small ubiquitin-related modifier (SUMO) family of eukaryotic proteins. The encoded protein is covalently conjugated to other proteins via a post-translation modification known as sumoylation. Sumoylation may play a role in a wide variety of cellular processes, including nuclear transport, DNA replication and repair, mitosis, transcriptional regulation, and signal transduction. Alternatively spliced transcript variants encoding distinct proteins have been described.

## Immunogen information

### Gene ID:

6612

### Uniprot

P55854

### Synonyms:

SUMO3; SMT3A; SMT3H1; SUMO-3; Smt3B

## Antibody Information

### Recommended dilutions:

WB 1:1000 - 1:2000 IHC

1:50 - 1:100 IF 1:100 -

1:300

### Source:

Rabbit

### Isotype:

IgG

### Purification:

Affinity purification

### Immunogen:

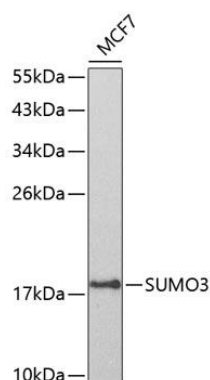
A synthetic peptide of human SUMO3

### Storage:

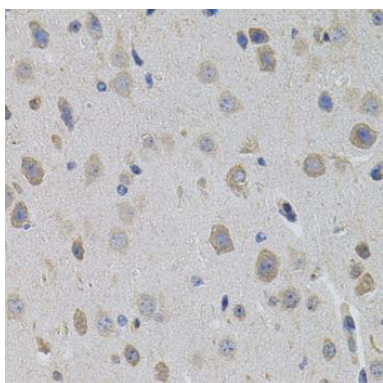
Store at -20°C. Avoid freeze / thaw cycles. Buffer: PBS with 0.02% sodium azide, 50% glycerol, pH7.3.

## Product Images

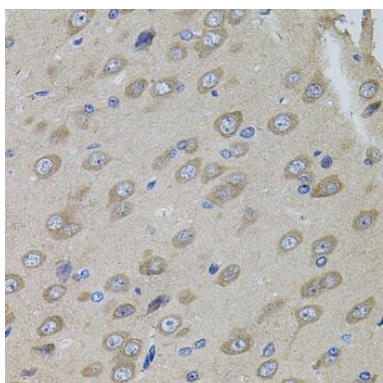
---



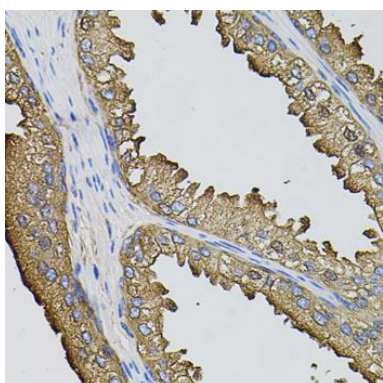
Western blot analysis of extracts of MCF-7 cells, using SUMO3 antibody (CAB3099) at 1:800 dilution. Secondary antibody: HRP Goat Anti-Rabbit IgG (H+L) (CABS014) at 1:10000 dilution. Lysates/proteins: 25ug per lane. Blocking buffer: 3% nonfat dry milk in TBST.



Immunohistochemistry of paraffin-embedded mouse brain using SUMO3 antibody (CAB3099) (40x lens).



Immunohistochemistry of paraffin-embedded rat brain using SUMO3 antibody (CAB3099) (40x lens).



Immunohistochemistry of paraffin-embedded human prostate using SUMO3 antibody (CAB3099) (40x lens).