

SUMO4 Rabbit Polyclonal Antibody



CAB3100

Product Information

Size:

20uL, 50uL, 100uL, 200uL

Observed MW:

18kDa

Calculated MW:

10kDa

Applications:

WB IHC

Reactivity:

Human, Mouse

Protein Background

This gene is a member of the SUMO gene family. This family of genes encode small ubiquitin-related modifiers that are attached to proteins and control the target proteins' subcellular localization, stability, or activity. The protein described in this record is located in the cytoplasm and specifically modifies IKBA, leading to negative regulation of NF-kappa-B-dependent transcription of the IL12B gene. A specific polymorphism in this SUMO gene, which leads to the M55V substitution, has been associated with type I diabetes. The RefSeq contains this polymorphism.

Immunogen information

Gene ID:

387082

Uniprot

Q6EEV6

Synonyms:

SUMO4; IDDM5; SMT3H4; SUMO-4; dJ281H8.4

Antibody Information

Recommended dilutions:

WB 1:1000 - 1:2000 IHC

1:100 - 1:300

Source:

Rabbit

Isotype:

IgG

Purification:

Affinity purification

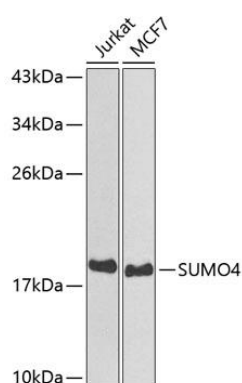
Immunogen:

A synthetic peptide of human SUMO4

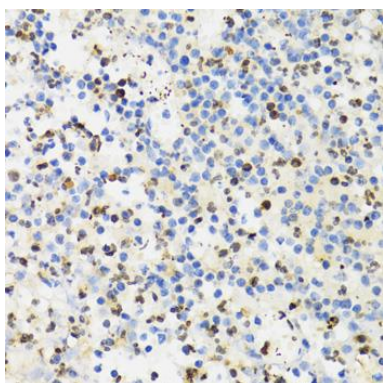
Storage:

Store at -20°C. Avoid freeze / thaw cycles. Buffer: PBS with 0.02% sodium azide, 50% glycerol, pH7.3.

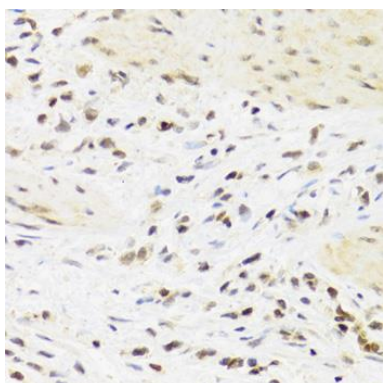
Product Images



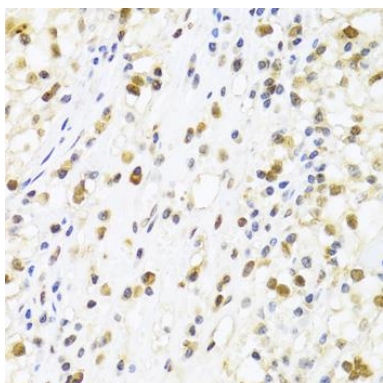
Western blot analysis of extracts of various cell lines, using SUMO4 antibody (CAB3100) at 1:800 dilution. Secondary antibody: HRP Goat Anti-Rabbit IgG (H+L) (CABS014) at 1:10000 dilution. Lysates/proteins: 25ug per lane. Blocking buffer: 3% nonfat dry milk in TBST.



Immunohistochemistry of paraffin-embedded human appendicitis using SUMO4 Antibody (CAB3100) at dilution of 1:100 (40x lens).



Immunohistochemistry of paraffin-embedded human breast cancer using SUMO4 Antibody (CAB3100) at dilution of 1:100 (40x lens).



Immunohistochemistry of paraffin-embedded human kidney cancer using SUMO4 Antibody (CAB3100) at dilution of 1:100 (40x lens).