

NFATC2 Rabbit Polyclonal Antibody



CAB3107

Product Information

Size:

20uL, 50uL, 100uL, 200uL

Observed MW:

130kDa

Calculated MW:

76kDa/97kDa/98kDa/99kDa/
100kDa

Applications:

WB IF

Reactivity:

Human, Mouse, Rat

Antibody Information

Recommended dilutions:

WB 1:500 - 1:1000 IF 1:50 -
1:200

Source:

Rabbit

Isotype:

IgG

Purification:

Affinity purification

Protein Background

This gene is a member of the nuclear factor of activated T cells (NFAT) family. The product of this gene is a DNA-binding protein with a REL-homology region (RHR) and an NFAT-homology region (NHR). This protein is present in the cytosol and only translocates to the nucleus upon T cell receptor (TCR) stimulation, where it becomes a member of the nuclear factors of activated T cells transcription complex. This complex plays a central role in inducing gene transcription during the immune response. Alternate transcriptional splice variants encoding different isoforms have been characterized.

Immunogen information

Gene ID:

4773

Uniprot

Q13469

Synonyms:

NFATC2; NFAT1; NFATP

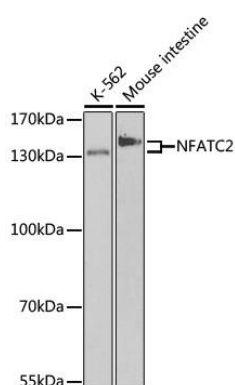
Immunogen:

A synthetic peptide of human NFATC2

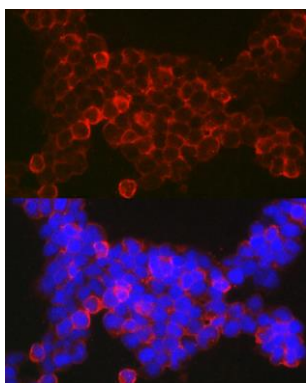
Storage:

Store at -20°C. Avoid freeze / thaw cycles. Buffer: PBS with 0.02% sodium azide, 50% glycerol, pH7.3.

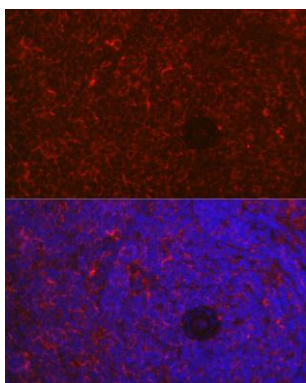
Product Images



Western blot analysis of extracts of various cell lines, using NFATC2 antibody (CAB3107) at 1:500 dilution. Secondary antibody: HRP Goat Anti-Rabbit IgG (H+L) (CABS014) at 1:10000 dilution. Lysates/proteins: 25ug per lane. Blocking buffer: 3% nonfat dry milk in TBST. Detection: ECL Enhanced Kit (CABM00021). Exposure time: 90s.



Immunofluorescence analysis of Jurkat cells using NFATC2 Rabbit pAb (CAB3107) at dilution of 1:100 (40x lens). Blue: DAPI for nuclear staining.



Immunofluorescence analysis of rat spleen using NFATC2 Rabbit pAb (CAB3107) at dilution of 1:100 (40x lens). Blue: DAPI for nuclear staining.