

NF- κ B2 Rabbit Polyclonal Antibody



CAB3108

Product Information

Size:

20uL, 50uL, 100uL, 200uL

Observed MW:

110kDa

Calculated MW:

47kDa/96kDa

Applications:

WB IHC IF

Reactivity:

Human, Mouse, Rat

Antibody Information

Recommended dilutions:

WB 1:500 - 1:2000 IHC 1:50
- 1:200 IF 1:50 - 1:200

Source:

Rabbit

Isotype:

IgG

Purification:

Affinity purification

Protein Background

This gene encodes a subunit of the transcription factor complex nuclear factor-kappa-B (NF κ B). The NF κ B complex is expressed in numerous cell types and functions as a central activator of genes involved in inflammation and immune function. The protein encoded by this gene can function as both a transcriptional activator or repressor depending on its dimerization partner. The p100 full-length protein is co-translationally processed into a p52 active form. Chromosomal rearrangements and translocations of this locus have been observed in B cell lymphomas, some of which may result in the formation of fusion proteins. There is a pseudogene for this gene on chromosome 18. Alternative splicing results in multiple transcript variants.

Immunogen information

Gene ID:

4791

Uniprot

Q00653

Synonyms:

CVID10; H2TF1; LYT-10; LYT10; NF- κ B2; p100; p49/p100; p52

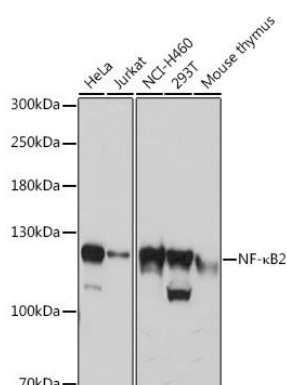
Immunogen:

Recombinant fusion protein containing a sequence corresponding to amino acids 690-899 of human NF- κ B2 (NP_002493.3).

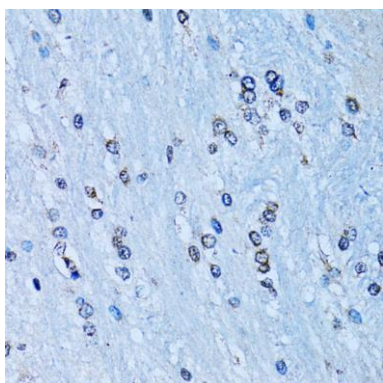
Storage:

Store at -20°C. Avoid freeze / thaw cycles. Buffer: PBS with 0.02% sodium azide, 50% glycerol, pH7.3.

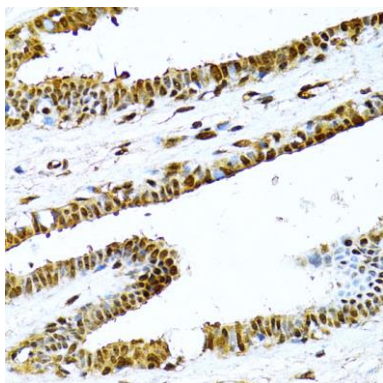
Product Images



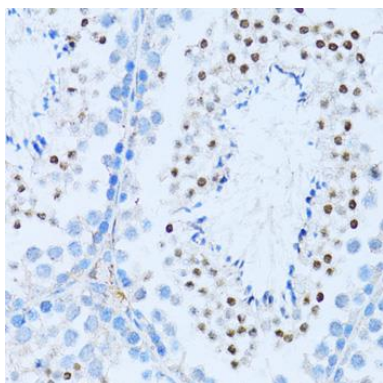
Western blot analysis of extracts of various cell lines, using NF-kB2 antibody (CAB3108) at 1:3000 dilution. Secondary antibody: HRP Goat Anti-Rabbit IgG (H+L) (CABS014) at 1:10000 dilution. Lysates/proteins: 25ug per lane. Blocking buffer: 3% nonfat dry milk in TBST. Detection: ECL Basic Kit (CABM00020). Exposure time: 30s.



Immunohistochemistry of paraffin-embedded rat brain using NF-kB2 antibody (CAB3108) at dilution of 1:100 (40x lens).



Immunohistochemistry of paraffin-embedded human breast using NF-kB2 antibody (CAB3108) at dilution of 1:100 (40x lens).



Immunohistochemistry of paraffin-embedded mouse testis using NF-kB2 antibody (CAB3108) at dilution of 1:100 (40x lens).