

# ADCYAP1R1 Rabbit Polyclonal Antibody



CAB3120

---

## Product Information

### Size:

20uL, 50uL, 100uL, 200uL

### Observed MW:

60kDa

### Calculated MW:

46kDa/51kDa/53kDa/54kDa/  
56kDa

### Applications:

WB

### Reactivity:

Human

## Antibody Information

### Recommended dilutions:

WB 1:500 - 1:2000

### Source:

Rabbit

### Isotype:

IgG

### Purification:

Affinity purification

## Protein Background

This gene encodes type I adenylyate cyclase activating polypeptide receptor, which is a membrane-associated protein and shares significant homology with members of the glucagon/secretin receptor family. This receptor mediates diverse biological actions of adenylyate cyclase activating polypeptide 1 and is positively coupled to adenylyate cyclase. Multiple alternatively spliced transcript variants encoding distinct isoforms have been identified.

## Immunogen information

### Gene ID:

117

### Uniprot

P41586

### Synonyms:

ADCYAP1R1; PAC1; PAC1R; PACAPR; PACAPRI

### Immunogen:

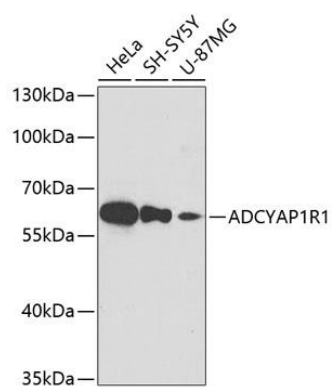
A synthetic peptide of human ADCYAP1R1

### Storage:

Store at -20°C. Avoid freeze / thaw cycles. Buffer: PBS with 0.02% sodium azide, 50% glycerol, pH7.3.

## Product Images

---



Western blot analysis of extracts of various cell lines, using ADCYAP1R1 antibody (CAB3120) at 1:400 dilution. Secondary antibody: HRP Goat Anti-Rabbit IgG (H+L) (CABS014) at 1:10000 dilution. Lysates/proteins: 25ug per lane. Blocking buffer: 3% nonfat dry milk in TBST. Detection: ECL Basic Kit (CABM00020). Exposure time: 90s.