

PPP2CB Rabbit Polyclonal Antibody



CAB3122

Product Information

Size:

20uL, 50uL, 100uL, 200uL

Observed MW:

36KDa

Calculated MW:

35kDa

Applications:

WB IHC IF

Reactivity:

Human, Mouse, Rat

Protein Background

This gene encodes the phosphatase 2A catalytic subunit. Protein phosphatase 2A is one of the four major Ser/Thr phosphatases, and it is implicated in the negative control of cell growth and division. It consists of a common heteromeric core enzyme, which is composed of a catalytic subunit and a constant regulatory subunit, that associates with a variety of regulatory subunits. This gene encodes a beta isoform of the catalytic subunit.

Immunogen information

Gene ID:

5516

Uniprot

P62714

Synonyms:

PPP2CB; PP2Abeta; PP2CB

Antibody Information

Recommended dilutions:

WB 1:500 - 1:2000 IHC

1:100 - 1:200 IF 1:50 -

1:200

Source:

Rabbit

Isotype:

IgG

Purification:

Affinity purification

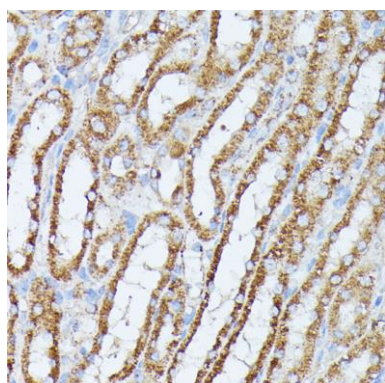
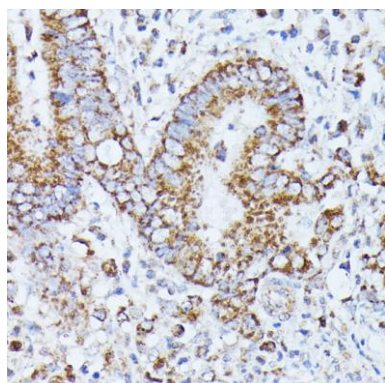
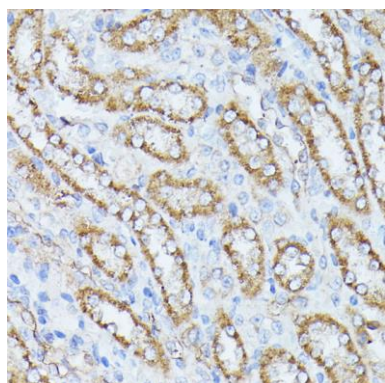
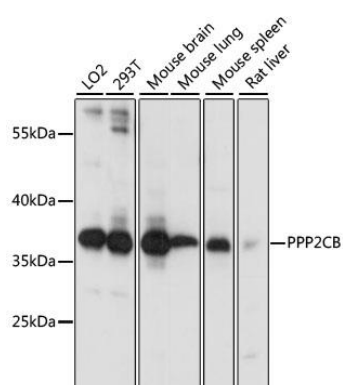
Immunogen:

Recombinant fusion protein containing a sequence corresponding to amino acids 1-309 of human PPP2CB (NP_001009552.1).

Storage:

Store at -20°C. Avoid freeze / thaw cycles. Buffer: PBS with 0.02% sodium azide, 50% glycerol, pH7.3.

Product Images



Western blot analysis of extracts of various cell lines, using PPP2CB antibody (CAB3122) at 1:1000 dilution. Secondary antibody: HRP Goat Anti-Rabbit IgG (H+L) (CABS014) at 1:10000 dilution. Lysates/proteins: 25ug per lane. Blocking buffer: 3% nonfat dry milk in TBST. Detection: ECL Basic Kit (CABM00020). Exposure time: 30s.

Immunohistochemistry of paraffin-embedded rat kidney using PPP2CB antibody (CAB3122) at dilution of 1:100 (40x lens).

Immunohistochemistry of paraffin-embedded human colon carcinoma using PPP2CB antibody (CAB3122) at dilution of 1:100 (40x lens).

Immunohistochemistry of paraffin-embedded mouse kidney using PPP2CB antibody (CAB3122) at dilution of 1:100 (40x lens).