

SFTPA1 Rabbit Polyclonal Antibody



CAB3133

Product Information

Size:

20uL, 50uL, 100uL, 200uL

Observed MW:

30KDa

Calculated MW:

26kDa/27kDa

Applications:

WB IHC

Reactivity:

Human, Mouse, Rat

Antibody Information

Recommended dilutions:

WB 1:500 - 1:1000 IHC 1:50
- 1:100

Source:

Rabbit

Isotype:

IgG

Purification:

Affinity purification

Protein Background

This gene encodes a lung surfactant protein that is a member of a subfamily of C-type lectins called collectins. The encoded protein binds specific carbohydrate moieties found on lipids and on the surface of microorganisms. This protein plays an essential role in surfactant homeostasis and in the defense against respiratory pathogens. Mutations in this gene are associated with idiopathic pulmonary fibrosis. Alternate splicing results in multiple transcript variants.

Immunogen information

Gene ID:

653509

Uniprot

Q8IWL2

Synonyms:

SFTPA1; COLEC4; PSAP; PSP-A; PSPA; SFTP1; SFTPA1B; SP-A; SP-A1; SPA; SPA1

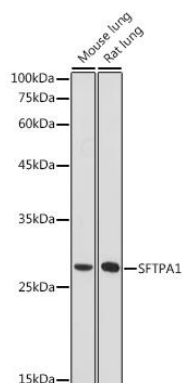
Immunogen:

A synthetic peptide of human SFTPA1

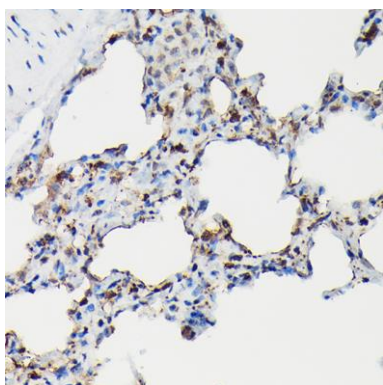
Storage:

Store at -20°C. Avoid freeze / thaw cycles. Buffer: PBS with 0.02% sodium azide, 50% glycerol, pH7.3.

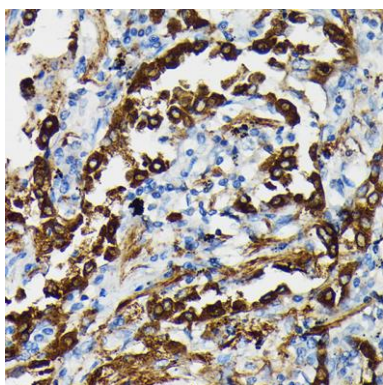
Product Images



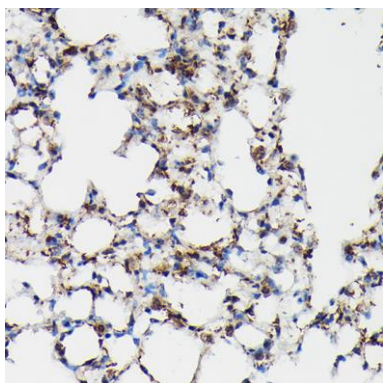
Western blot analysis of extracts of various cell lines, using SFTP A1 antibody (CAB3133) at 1:1000 dilution. Secondary antibody: HRP Goat Anti-Rabbit IgG (H+L) (CABS014) at 1:10000 dilution. Lysates/proteins: 25ug per lane. Blocking buffer: 3% nonfat dry milk in TBST. Detection: ECL Basic Kit (CABM00020). Exposure time: 10s.



Immunohistochemistry of paraffin-embedded rat lung using SFTP A1 Rabbit pAb (CAB3133) at dilution of 1:50 (40x lens).



Immunohistochemistry of paraffin-embedded human lung cancer using SFTP A1 Rabbit pAb (CAB3133) at dilution of 1:50 (40x lens).



Immunohistochemistry of paraffin-embedded mouse lung using SFTP A1 Rabbit pAb (CAB3133) at dilution of 1:50 (40x lens).