

# SSTR2 Rabbit Polyclonal Antibody



CAB3135

## Product Information

### Size:

20uL, 50uL, 100uL, 200uL

### Observed MW:

56kDa

### Calculated MW:

40kDa/41kDa

### Applications:

WB IHC IF

### Reactivity:

Human, Mouse, Rat

## Protein Background

Somatostatin acts at many sites to inhibit the release of many hormones and other secretory proteins. The biologic effects of somatostatin are probably mediated by a family of G protein-coupled receptors that are expressed in a tissue-specific manner. SSTR2 is a member of the superfamily of receptors having seven transmembrane segments and is expressed in highest levels in cerebrum and kidney.

## Immunogen information

### Gene ID:

6752

### Uniprot

P30874

### Synonyms:

SSTR2; somatostatin receptor 2; SS 2 R; SS2R; SRIF 1; SS2 R; SRIF-1

## Antibody Information

### Recommended dilutions:

WB 1:500 - 1:1000 IHC 1:50  
- 1:100 IF 1:100 - 1:200

### Source:

Rabbit

### Isotype:

IgG

### Purification:

Affinity purification

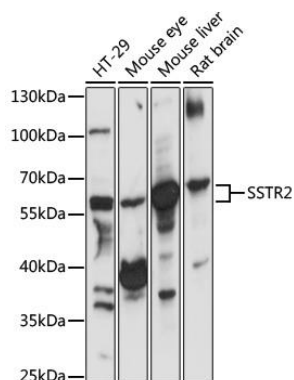
### Immunogen:

A synthetic peptide corresponding to a sequence within amino acids 300 to the C-terminus of human SSTR2 (NP\_001041.1).

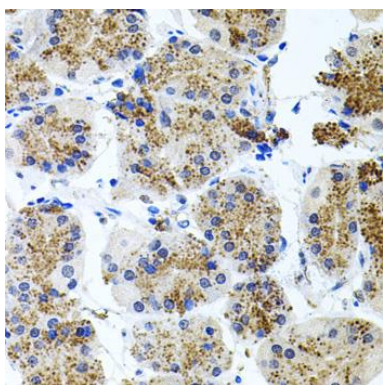
### Storage:

Store at -20°C. Avoid freeze / thaw cycles. Buffer: PBS with 0.02% sodium azide, 50% glycerol, pH7.3.

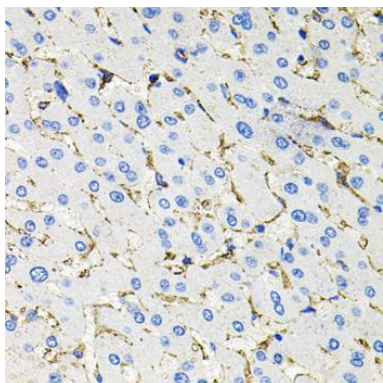
## Product Images



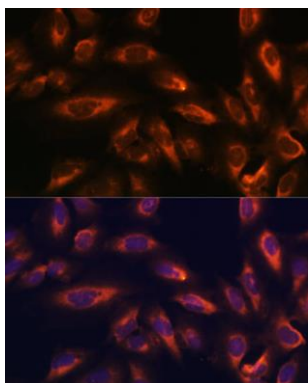
Western blot analysis of extracts of various cell lines, using SSTR2 antibody (CAB3135) at 1:1000 dilution. Secondary antibody: HRP Goat Anti-Rabbit IgG (H+L) (CABS014) at 1:10000 dilution. Lysates/proteins: 25ug per lane. Blocking buffer: 3% nonfat dry milk in TBST. Detection: ECL Basic Kit (CABM00020). Exposure time: 30s.



Immunohistochemistry of paraffin-embedded human stomach using SSTR2 antibody (CAB3135) at dilution of 1:100 (40x lens).



Immunohistochemistry of paraffin-embedded human liver tissue using SSTR2 antibody (CAB3135) at dilution of 1:100 (40x lens).



Immunofluorescence analysis of U-2 OS cells using SSTR2 Polyclonal Antibody (CAB3135) at dilution of 1:100 (40x lens). Blue: DAPI for nuclear staining.