

ARF6 Rabbit Polyclonal Antibody



CAB3162

Product Information

Size:

20uL, 50uL, 100uL, 200uL

Observed MW:

20kDa

Calculated MW:

20kDa

Applications:

WB IHC

Reactivity:

Human, Rat

Protein Background

This gene encodes a member of the human ARF gene family, which is part of the RAS superfamily. The ARF genes encode small guanine nucleotide-binding proteins that stimulate the ADP-ribosyltransferase activity of cholera toxin and play a role in vesicular trafficking and as activators of phospholipase D. The product of this gene is localized to the plasma membrane, and regulates vesicular trafficking, remodelling of membrane lipids, and signaling pathways that lead to actin remodeling. A pseudogene of this gene is located on chromosome 7.

Immunogen information

Gene ID:

382

Uniprot

P62330

Synonyms:

ARF6

Antibody Information

Recommended dilutions:

WB 1:100 - 1:500 IHC 1:50 - 1:100

Source:

Rabbit

Isotype:

IgG

Purification:

Affinity purification

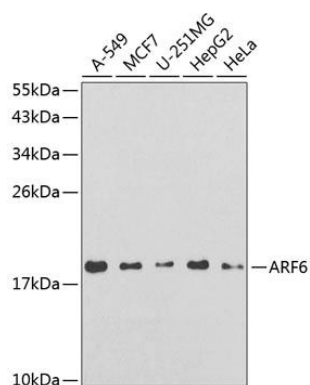
Immunogen:

A synthetic peptide of human ARF6

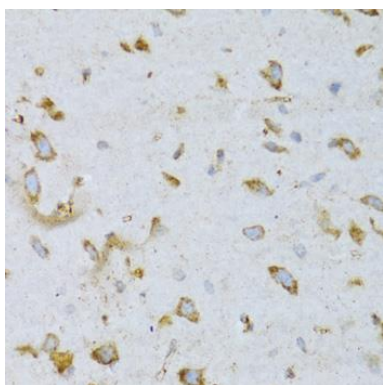
Storage:

Store at -20°C. Avoid freeze / thaw cycles. Buffer: PBS with 0.02% sodium azide, 50% glycerol, pH7.3.

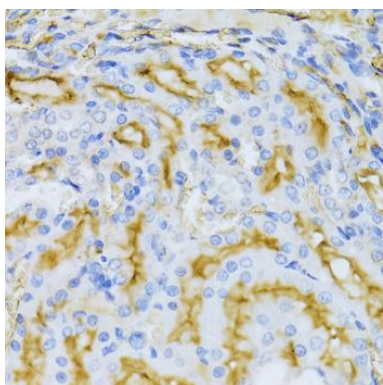
Product Images



Western blot analysis of extracts of various cell lines, using ARF6 antibody (CAB3162) at 1:250 dilution. Secondary antibody: HRP Goat Anti-Rabbit IgG (H+L) (CABS014) at 1:10000 dilution. Lysates/proteins: 25ug per lane. Blocking buffer: 3% nonfat dry milk in TBST.



Immunohistochemistry of paraffin-embedded rat brain using ARF6 Antibody (CAB3162) at dilution of 1:100 (40x lens).



Immunohistochemistry of paraffin-embedded rat kidney using ARF6 Antibody (CAB3162) at dilution of 1:100 (40x lens).