

# YKL-40 / CHI3L1 Rabbit Polyclonal Antibody



CAB3166

## Product Information

### Size:

20uL, 50uL, 100uL, 200uL

### Observed MW:

43kDa

### Calculated MW:

42kDa

### Applications:

WB IHC IF

### Reactivity:

Human, Mouse, Rat

## Antibody Information

### Recommended dilutions:

WB 1:500 - 1:2000 IHC 1:50  
- 1:200 IF 1:50 - 1:200

### Source:

Rabbit

### Isotype:

IgG

### Purification:

Affinity purification

## Protein Background

Chitinases catalyze the hydrolysis of chitin, which is an abundant glycopolymer found in insect exoskeletons and fungal cell walls. The glycoside hydrolase 18 family of chitinases includes eight human family members. This gene encodes a glycoprotein member of the glycosyl hydrolase 18 family. The protein lacks chitinase activity and is secreted by activated macrophages, chondrocytes, neutrophils and synovial cells. The protein is thought to play a role in the process of inflammation and tissue remodeling.

## Immunogen information

### Gene ID:

1116

### Uniprot

P36222

### Synonyms:

CHI3L1; ASRT7; CGP-39; GP-39; GP39; HC-gp39; HCGP-3P; YKL-40;  
YKL40; YYL-40; hCGP-39

### Immunogen:

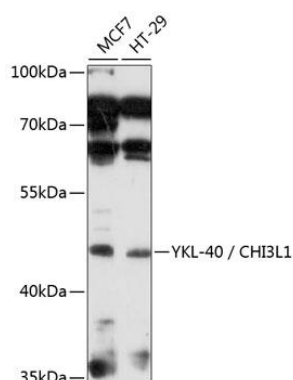
Recombinant fusion protein containing a sequence corresponding to amino acids 22-240 of human YKL-40 / CHI3L1 (NP\_001267.2).

### Storage:

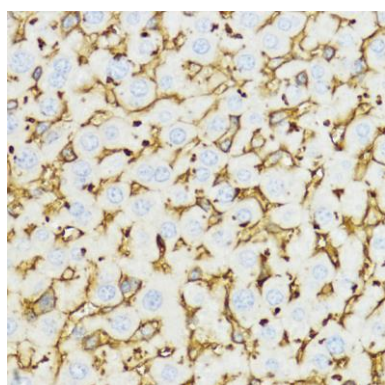
Store at -20°C. Avoid freeze / thaw cycles. Buffer: PBS with 0.02% sodium azide, 50% glycerol, pH7.3.

## Product Images

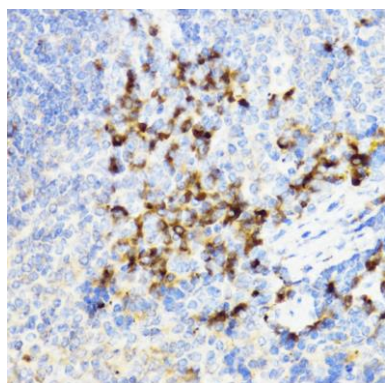
---



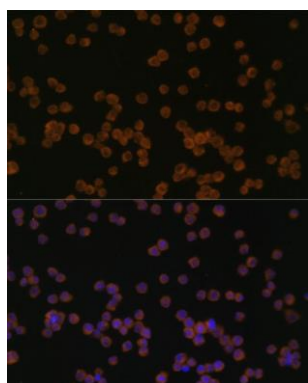
Western blot analysis of extracts of various cell lines, using YKL-40 / CHI3L1 antibody (CAB3166) at 1:1000 dilution. Secondary antibody: HRP Goat Anti-Rabbit IgG (H+L) (CABS014) at 1:10000 dilution. Lysates/proteins: 25ug per lane. Blocking buffer: 3% nonfat dry milk in TBST. Detection: ECL Basic Kit (CABM00020). Exposure time: 30s.



Immunohistochemistry of paraffin-embedded mouse liver using YKL-40 / CHI3L1 antibody (CAB3166) at dilution of 1:100 (40x lens).



Immunohistochemistry of paraffin-embedded mouse spleen using YKL-40 / CHI3L1 antibody (CAB3166) at dilution of 1:100 (40x lens).



Immunofluorescence analysis of Raw264.7 cells using YKL-40 / CHI3L1 antibody (CAB3166) at dilution of 1:100. Blue: DAPI for nuclear staining.