

# DNMT3A Rabbit Polyclonal Antibody



CAB3169

## Product Information

### Size:

20uL, 50uL, 100uL, 200uL

### Observed MW:

95kDa

### Calculated MW:

16kDa/81kDa/101kDa

### Applications:

WB IHC IF

### Reactivity:

Human, Mouse, Rat

## Protein Background

CpG methylation is an epigenetic modification that is important for embryonic development, imprinting, and X-chromosome inactivation. Studies in mice have demonstrated that DNA methylation is required for mammalian development. This gene encodes a DNA methyltransferase that is thought to function in de novo methylation, rather than maintenance methylation. The protein localizes to the cytoplasm and nucleus and its expression is developmentally regulated.

## Immunogen information

### Gene ID:

1788

### Uniprot

Q9Y6K1

### Synonyms:

DNMT3A; DNMT3A2; M.Hsa111A; TBRS; DNMT3A

## Antibody Information

### Recommended dilutions:

WB 1:500 - 1:2000 IHC 1:50  
- 1:200 IF 1:50 - 1:200

### Source:

Rabbit

### Isotype:

IgG

### Purification:

Affinity purification

### Immunogen:

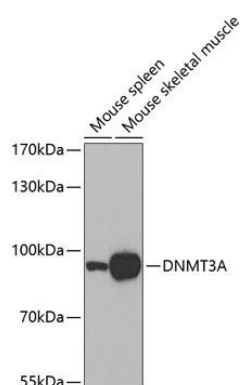
Recombinant protein of human DNMT3A

### Storage:

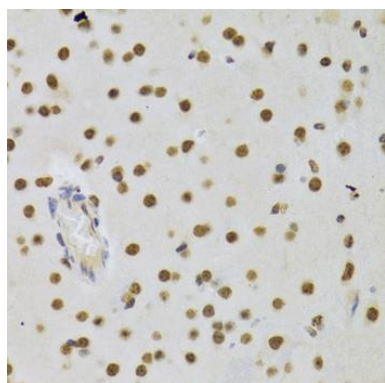
Store at -20°C. Avoid freeze / thaw cycles. Buffer: PBS with 0.02% sodium azide, 50% glycerol, pH7.3.

## Product Images

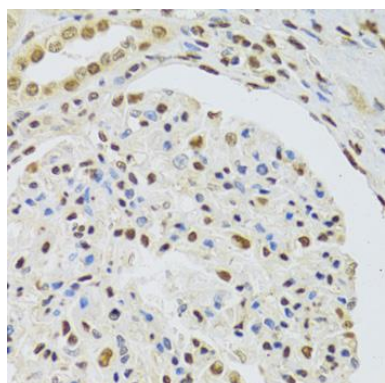
---



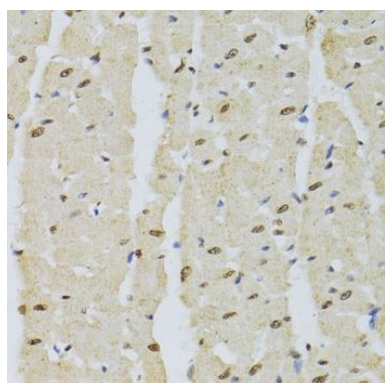
Western blot analysis of extracts of various cell lines, using DNMT3A antibody (CAB3169). Secondary antibody: HRP Goat Anti-Rabbit IgG (H+L) (CABS014) at 1:10000 dilution. Lysates/proteins: 25ug per lane. Blocking buffer: 3% nonfat dry milk in TBST. Detection: ECL Basic Kit (CABM00020). Exposure time: 90s.



Immunohistochemistry of paraffin-embedded rat brain using DNMT3A Antibody (CAB3169) at dilution of 1:100 (40x lens).



Immunohistochemistry of paraffin-embedded human kidney using DNMT3A Antibody (CAB3169) at dilution of 1:100 (40x lens).



Immunohistochemistry of paraffin-embedded mouse heart using DNMT3A Antibody (CAB3169) at dilution of 1:100 (40x lens).