

# DRD5 Rabbit Polyclonal Antibody



CAB3170

---

## Product Information

### Size:

20uL, 50uL, 100uL, 200uL

### Observed MW:

53kDa

### Calculated MW:

52kDa

### Applications:

WB

### Reactivity:

Rat

## Protein Background

This gene encodes the D5 subtype of the dopamine receptor. The D5 subtype is a G-protein coupled receptor which stimulates adenylyl cyclase. This receptor is expressed in neurons in the limbic regions of the brain. It has a 10-fold higher affinity for dopamine than the D1 subtype. Pseudogenes related to this gene reside on chromosomes 1 and 2.

## Immunogen information

### Gene ID:

1816

### Uniprot

P21918

### Synonyms:

DRD5; DBDR; DRD1B; DRD1L2

## Antibody Information

### Recommended dilutions:

WB 1:500 - 1:2000

### Source:

Rabbit

### Isotype:

IgG

### Purification:

Affinity purification

### Immunogen:

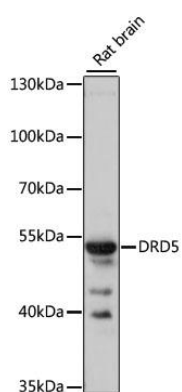
Recombinant fusion protein containing a sequence corresponding to amino acids 361-477 of human DRD5 (NP\_000789.1).

### Storage:

Store at -20°C. Avoid freeze / thaw cycles. Buffer: PBS with 0.02% sodium azide, 50% glycerol, pH7.3.

## Product Images

---



Western blot analysis of extracts of rat brain, using DRD5 antibody (CAB3170) at 1:1000 dilution. Secondary antibody: HRP Goat Anti-Rabbit IgG (H+L) (CABS014) at 1:10000 dilution. Lysates/proteins: 25ug per lane. Blocking buffer: 3% nonfat dry milk in TBST. Detection: ECL Basic Kit (CABM00020). Exposure time: 15s.