

FSHR Rabbit Polyclonal Antibody



CAB3172

Product Information

Size:

20uL, 50uL, 100uL, 200uL

Observed MW:

72kDa

Calculated MW:

71kDa/75kDa/78kDa/81kDa

Applications:

WB IHC IF

Reactivity:

Human, Rat

Protein Background

The protein encoded by this gene belongs to family 1 of G-protein coupled receptors. It is the receptor for follicle stimulating hormone and functions in gonad development. Mutations in this gene cause ovarian dysgenesis type 1, and also ovarian hyperstimulation syndrome. Alternative splicing results in multiple transcript variants.

Immunogen information

Gene ID:

2492

Uniprot

P23945

Synonyms:

FSHR; FSHR1; FSHRO; LGR1; ODG1

Antibody Information

Recommended dilutions:

WB 1:500 - 1:2000 IHC 1:50
- 1:200 IF 1:50 - 1:200

Source:

Rabbit

Isotype:

IgG

Purification:

Affinity purification

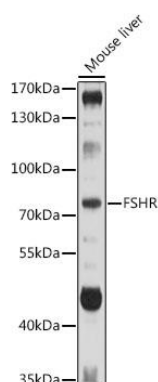
Immunogen:

Recombinant protein of human FSHR

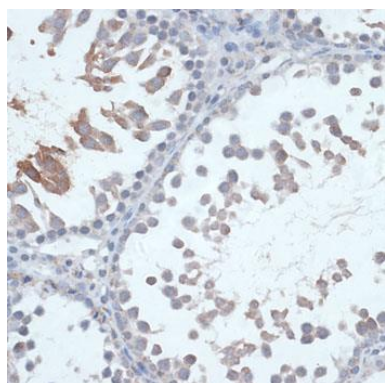
Storage:

Store at -20°C. Avoid freeze / thaw cycles. Buffer: PBS with 0.02% sodium azide, 50% glycerol, pH7.3.

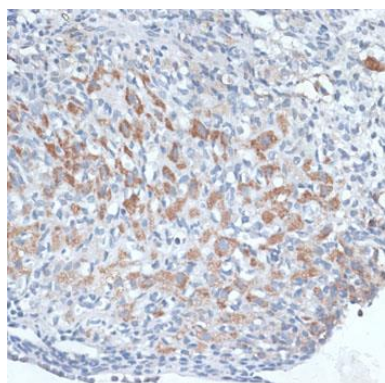
Product Images



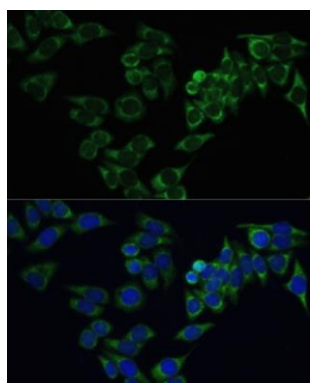
Western blot analysis of extracts of SW620 cells, using FSHR antibody (CAB3172). Secondary antibody: HRP Goat Anti-Rabbit IgG (H+L) (CABS014) at 1:10000 dilution. Lysates/proteins: 25ug per lane. Blocking buffer: 3% nonfat dry milk in TBST.



Immunohistochemistry of paraffin-embedded rat testis using FSHR antibody (CAB3172) at dilution of 1:100 (40x lens).



Immunohistochemistry of paraffin-embedded rat ovary using FSHR antibody (CAB3172) at dilution of 1:100 (40x lens).



Immunofluorescence analysis of HeLa cells using FSHR antibody (CAB3172) at dilution of 1:100. Blue: DAPI for nuclear staining.