

# TFAM Rabbit Monoclonal Antibody



CAB3173

## Product Information

### Size:

20uL, 50uL, 100uL, 200uL

### Observed MW:

24KDa

### Calculated MW:

24kDa

### Applications:

WB IHC IF

### Reactivity:

Human

## Protein Background

This gene encodes a key mitochondrial transcription factor containing two high mobility group motifs. The encoded protein also functions in mitochondrial DNA replication and repair. Sequence polymorphisms in this gene are associated with Alzheimer's and Parkinson's diseases. There are pseudogenes for this gene on chromosomes 6, 7, and 11. Alternative splicing results in multiple transcript variants. [provided by RefSeq, Aug 2012]

## Immunogen information

### Gene ID:

7019

### Uniprot

Q00059

### Synonyms:

MTDPS15; MTTF1; MTTFA; TCF6; TCF6L1; TCF6L2; TCF6L3

## Antibody Information

### Recommended dilutions:

WB 1:500 - 1:2000 IHC  
1:50 - 1:200 IF 1:50 - 1:200

### Source:

Rabbit

### Isotype:

IgG

### Purification:

Affinity purification

### Immunogen:

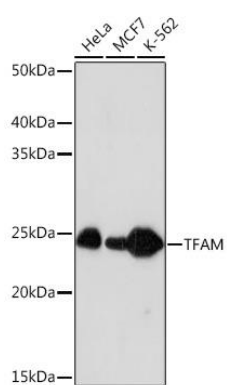
A synthesized peptide derived from human TFAM

### Storage:

Store at -20°C. Avoid freeze / thaw cycles. Buffer: PBS with 0.02% sodium azide, 0.05% BSA, 50% glycerol, pH7.3.

## Product Images

---



Western blot - TFAM Rabbit mAb (CAB3173)