

CD31/PECAM1 Rabbit Polyclonal Antibody



CAB3181

Product Information

Size:

20uL, 50uL, 100uL, 200uL

Observed MW:

130kDa

Calculated MW:

79kDa/80kDa/81kDa/82kDa

Applications:

WB, IHC, IP

Reactivity:

Human, Mouse

Category:

Polyclonal Antibodies

Antibody Information

Recommended dilutions:

WB 1:500 - 1:2000

IHC 1:50 - 1:200

IP 1:50 - 1:200

Source:

Rabbit

Isotype:

IgG

Purification:

Affinity purification

Protein Background

The protein encoded by this gene is found on the surface of platelets, monocytes, neutrophils, and some types of T-cells, and makes up a large portion of endothelial cell intercellular junctions. The encoded protein is a member of the immunoglobulin superfamily and is likely involved in leukocyte migration, angiogenesis, and integrin activation.

Immunogen information

Gene ID:

18613

Uniprot

Q08481

Synonyms:

PECAM1; CD31; CD31/EndoCAM; GPIIA; PECA1; PECAM-1; endoCAM

Immunogen:

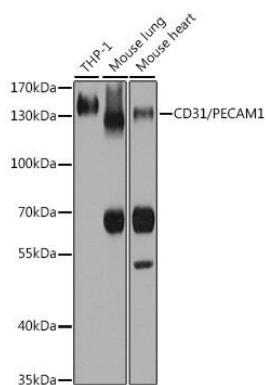
A synthetic peptide corresponding to a sequence within amino acids 600 to the C-terminus of mouse CD31/PECAM1 (NP_001292086.1).

Storage:

Store at -20°C. Avoid freeze / thaw cycles.

Buffer: PBS with 0.02% sodium azide, 50% glycerol, pH7.3.

Product Images



Western blot analysis of extracts of various cell lines, using CD31/PECAM1 antibody (CAB3181) at 1:1000 dilution.

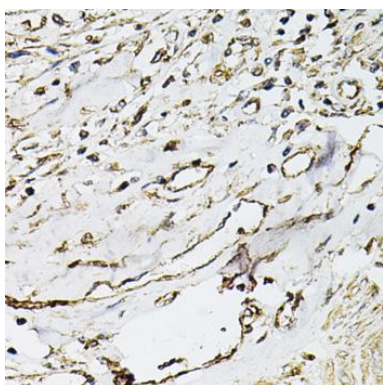
Secondary antibody: HRP Goat Anti-Rabbit IgG (H+L) (CABS014) at 1:10000 dilution.

Lysates/proteins: 25ug per lane.

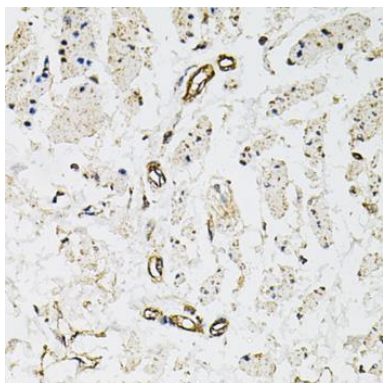
Blocking buffer: 3% non-fat dry milk in TBST.

Detection: ECL Enhanced Kit.

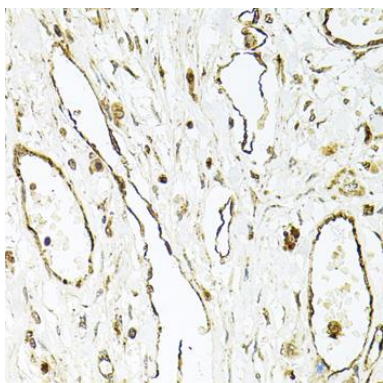
Exposure time: 3s.



Immunohistochemistry of paraffin-embedded human prostate cancer using CD31/PECAM1 antibody (CAB3181) at dilution of 1:100 (40x lens).



Immunohistochemistry of paraffin-embedded human esophagus using CD31/PECAM1 antibody (CAB3181) at dilution of 1:100 (40x lens).



Immunohistochemistry of paraffin-embedded human gastric cancer using CD31/PECAM1 antibody (CAB3181) at dilution of 1:100 (40x lens).