

ABCA6 Rabbit Polyclonal Antibody



CAB3191

Product Information

Size:

20uL, 50uL, 100uL, 200uL

Observed MW:

183kDa

Calculated MW:

44kDa/183kDa

Applications:

WB IHC IF

Reactivity:

Human, Mouse, Rat

Antibody Information

Recommended dilutions:

WB 1:500 - 1:2000 IHC 1:50
- 1:200 IF 1:50 - 1:200

Source:

Rabbit

Isotype:

IgG

Purification:

Affinity purification

Protein Background

The membrane-associated protein encoded by this gene is a member of the superfamily of ATP-binding cassette (ABC) transporters. ABC proteins transport various molecules across extra- and intracellular membranes. ABC genes are divided into seven distinct subfamilies (ABC1, MDR/TAP, MRP, ALD, OABP, GCN20, and White). This encoded protein is a member of the ABC1 subfamily. Members of the ABC1 subfamily comprise the only major ABC subfamily found exclusively in multicellular eukaryotes. This gene is clustered among 4 other ABC1 family members on 17q24 and may play a role in macrophage lipid homeostasis.

Immunogen information

Gene ID:

76184

Uniprot

Synonyms:

ABCA6; EST155051; Abca6

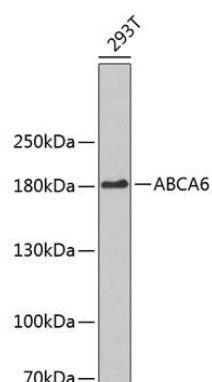
Immunogen:

Recombinant protein of mouse ABCA6

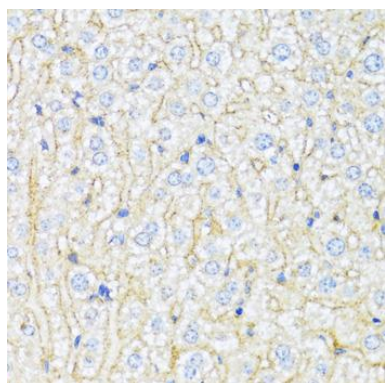
Storage:

Store at -20°C. Avoid freeze / thaw cycles. Buffer: PBS with 0.02% sodium azide, 50% glycerol, pH7.3.

Product Images



Western blot analysis of extracts of 293T cells, using ABCA6 antibody (CAB3191). Secondary antibody: HRP Goat Anti-Rabbit IgG (H+L) (CABS014) at 1:10000 dilution. Lysates/proteins: 25ug per lane. Blocking buffer: 3% nonfat dry milk in TBST.



Immunohistochemistry of paraffin-embedded mouse liver using ABCA6 antibody (CAB3191) at dilution of 1:100 (40x lens).