

FAM160B2 Rabbit Polyclonal Antibody



CAB3192

Product Information

Size:

20uL, 50uL, 100uL, 200uL

Observed MW:

82kDa

Calculated MW:

82kDa

Applications:

WB IHC

Reactivity:

Human, Mouse, Rat

Antibody Information

Recommended dilutions:

WB 1:500 - 1:2000 IHC 1:50
- 1:200

Source:

Rabbit

Isotype:

IgG

Purification:

Affinity purification

Protein Background

Immunogen information

Gene ID:

64760

Uniprot

Q86V87

Synonyms:

FAM160B2; RAI16

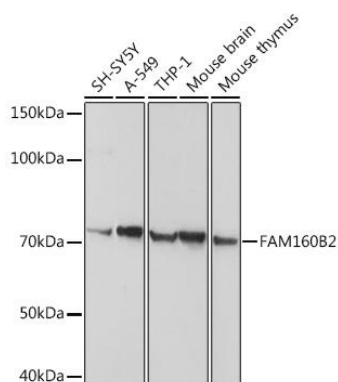
Immunogen:

A synthetic peptide corresponding to a sequence within amino acids 420-520 of human FAM160B2 (NP_073586.5).

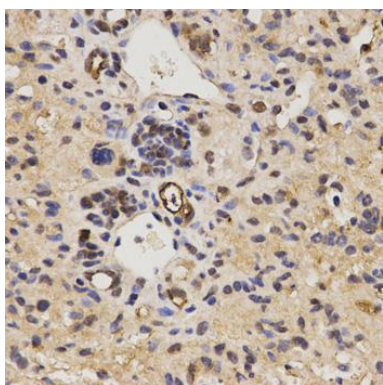
Storage:

Store at -20°C. Avoid freeze / thaw cycles. Buffer: PBS with 0.02% sodium azide, 50% glycerol, pH7.3.

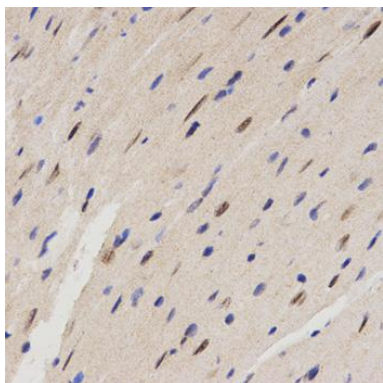
Product Images



Western blot analysis of extracts of various cell lines, using FAM160B2 antibody (CAB3192) at 1:1000 dilution. Secondary antibody: HRP Goat Anti-Rabbit IgG (H+L) (CABS014) at 1:10000 dilution. Lysates/proteins: 25ug per lane. Blocking buffer: 3% nonfat dry milk in TBST. Detection: ECL Basic Kit (CABM00020). Exposure time: 10s.



Immunohistochemistry of paraffin-embedded mouse liver fibrosis using FAM160B2 antibody (CAB3192) at dilution of 1:200 (40x lens).



Immunohistochemistry of paraffin-embedded mouse heart using FAM160B2 antibody (CAB3192) at dilution of 1:200 (40x lens).