

# CAMK2G Rabbit Polyclonal Antibody



CAB3231

---

## Product Information

### Size:

20uL, 50uL, 100uL, 200uL

### Observed MW:

75kDa/80kDa

### Calculated MW:

55kDa/58kDa/59kDa/60kDa/  
61kDa/62kDa/65kDa

### Applications:

WB IHC IF

### Reactivity:

Human, Mouse, Rat

## Protein Background

The product of this gene is one of the four subunits of an enzyme which belongs to the serine/threonine protein kinase family, and to the Ca(2+)/calmodulin-dependent protein kinase subfamily. Calcium signaling is crucial for several aspects of plasticity at glutamatergic synapses. In mammalian cells the enzyme is composed of four different chains: alpha, beta, gamma, and delta. The product of this gene is a gamma chain. Many alternatively spliced transcripts encoding different isoforms have been described but the full-length nature of all the variants has not been determined.

## Immunogen information

### Gene ID:

818

### Uniprot

Q13555

### Synonyms:

CAMK2G; CAMK; CAMK-II; CAMKG

## Antibody Information

### Recommended dilutions:

WB 1:500 - 1:2000 IHC 1:50  
- 1:200 IF 1:50 - 1:200

### Source:

Rabbit

### Isotype:

IgG

### Purification:

Affinity purification

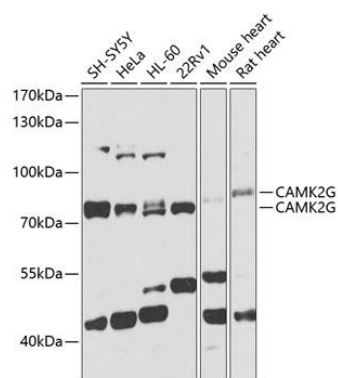
### Immunogen:

Recombinant fusion protein containing a sequence corresponding to amino acids 300-410 of human CAMK2G (NP\_751909.1).

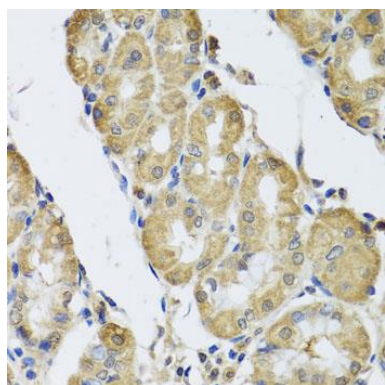
### Storage:

Store at -20°C. Avoid freeze / thaw cycles. Buffer: PBS with 0.02% sodium azide, 50% glycerol, pH7.3.

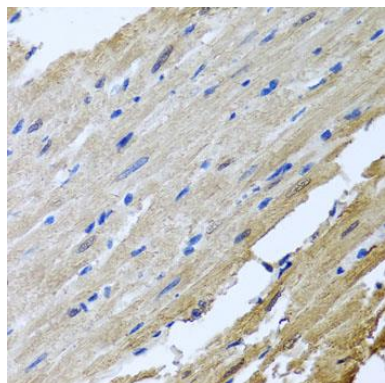
## Product Images



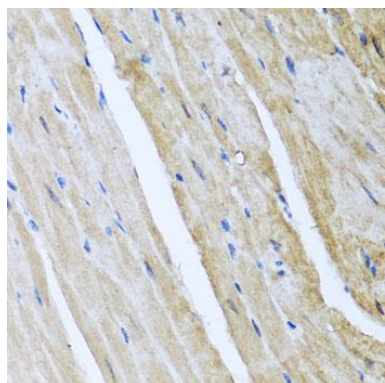
Western blot analysis of extracts of various cell lines, using CAMK2G antibody (CAB3231) at 1:1000 dilution. Secondary antibody: HRP Goat Anti-Rabbit IgG (H+L) (CABS014) at 1:10000 dilution. Lysates/proteins: 25ug per lane. Blocking buffer: 3% nonfat dry milk in TBST. Detection: ECL Basic Kit (CABM00020). Exposure time: 10s.



Immunohistochemistry of paraffin-embedded human stomach using CAMK2G antibody (CAB3231) at dilution of 1:100 (40x lens).



Immunohistochemistry of paraffin-embedded rat heart using CAMK2G antibody (CAB3231) at dilution of 1:100 (40x lens).



Immunohistochemistry of paraffin-embedded mouse heart using CAMK2G antibody (CAB3231) at dilution of 1:100 (40x lens).