

RBM17 Rabbit Polyclonal Antibody



CAB3240

Product Information

Size:

20uL, 50uL, 100uL, 200uL

Observed MW:

50kDa

Calculated MW:

44kDa

Applications:

WB IHC

Reactivity:

Human, Mouse, Rat

Protein Background

This gene encodes an RNA binding protein. The encoded protein is part of the spliceosome complex and functions in the second catalytic step of mRNA splicing. Alternatively spliced transcript variants have been described. Related pseudogenes exist on chromosomes 9 and 15.

Immunogen information

Gene ID:

84991

Uniprot

Q96I25

Synonyms:

RBM17; SPF45

Antibody Information

Recommended dilutions:

WB 1:200 - 1:2000 IHC 1:50
- 1:200

Source:

Rabbit

Isotype:

IgG

Purification:

Affinity purification

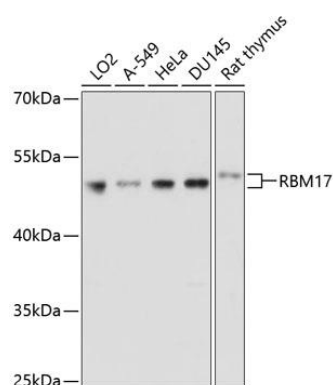
Immunogen:

Recombinant fusion protein containing a sequence corresponding to amino acids 1-240 of human RBM17 (NP_116294.1).

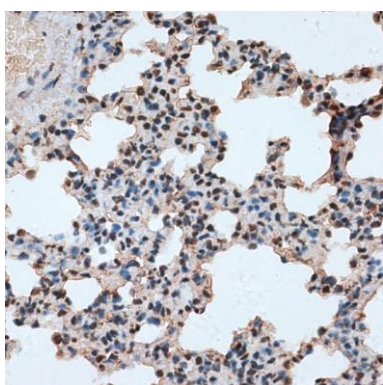
Storage:

Store at -20°C. Avoid freeze / thaw cycles. Buffer: PBS with 0.02% sodium azide, 50% glycerol, pH7.3.

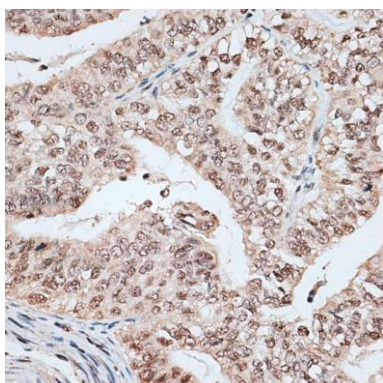
Product Images



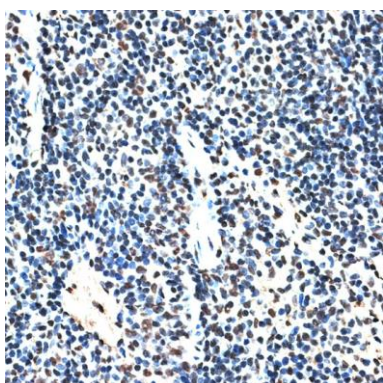
Western blot analysis of extracts of various cell lines, using RBM17 antibody (CAB3240) at 1:1000 dilution. Secondary antibody: HRP Goat Anti-Rabbit IgG (H+L) (CABS014) at 1:10000 dilution. Lysates/proteins: 25ug per lane. Blocking buffer: 3% nonfat dry milk in TBST. Detection: ECL Basic Kit (CABM00020). Exposure time: 30s.



Immunohistochemistry of paraffin-embedded rat lung using RBM17 antibody (CAB3240) at dilution of 1:100 (40x lens).



Immunohistochemistry of paraffin-embedded human endometrium cancer using RBM17 antibody (CAB3240) at dilution of 1:100 (40x lens).



Immunohistochemistry of paraffin-embedded mouse spleen using RBM17 antibody (CAB3240) at dilution of 1:100 (40x lens).