

# NELFE Rabbit Polyclonal Antibody



CAB3249

---

## Product Information

### Size:

20uL, 50uL, 100uL, 200uL

### Observed MW:

43kDa

### Calculated MW:

40kDa/43kDa

### Applications:

WB IHC IF

### Reactivity:

Human, Mouse, Rat

## Protein Background

The protein encoded by this gene is part of a complex termed negative elongation factor (NELF) which represses RNA polymerase II transcript elongation. This protein bears similarity to nuclear RNA-binding proteins; however, it has not been demonstrated that this protein binds RNA. The protein contains a tract of alternating basic and acidic residues, largely arginine (R) and aspartic acid (D). The gene localizes to the major histocompatibility complex (MHC) class III region on chromosome 6.

## Immunogen information

### Gene ID:

7936

### Uniprot

P18615

### Synonyms:

NELFE; D6S45; NELF-E; RD; RDBP; RDP

## Antibody Information

### Recommended dilutions:

WB 1:500 - 1:2000 IHC 1:50  
- 1:200 IF 1:50 - 1:200

### Source:

Rabbit

### Isotype:

IgG

### Purification:

Affinity purification

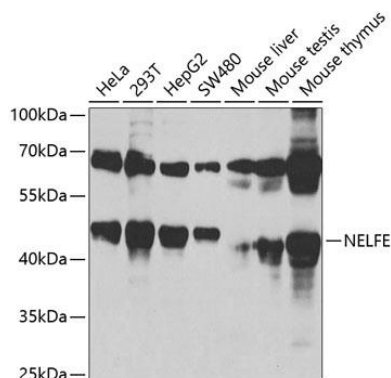
### Immunogen:

Recombinant fusion protein containing a sequence corresponding to amino acids 1-280 of human NELFE (NP\_002895.3).

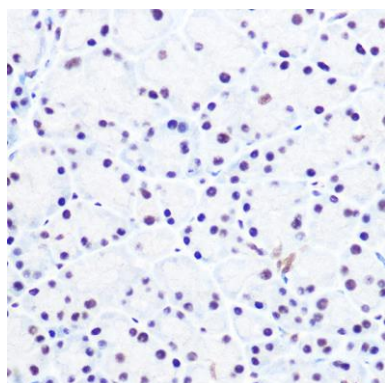
### Storage:

Store at -20°C. Avoid freeze / thaw cycles. Buffer: PBS with 0.02% sodium azide, 50% glycerol, pH7.3.

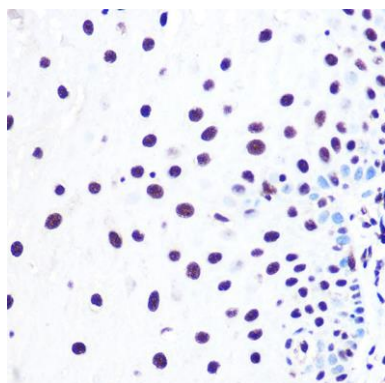
## Product Images



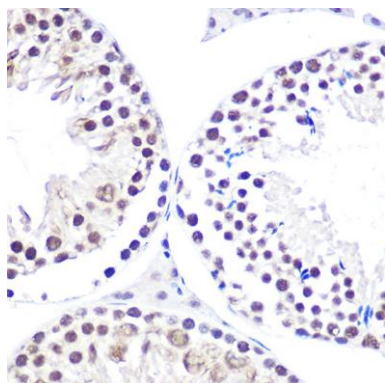
Western blot analysis of extracts of various cell lines, using NELFE antibody (CAB3249) at 1:1000 dilution. Secondary antibody: HRP Goat Anti-Rabbit IgG (H+L) (CABS014) at 1:10000 dilution. Lysates/proteins: 25ug per lane. Blocking buffer: 3% nonfat dry milk in TBST. Detection: ECL Basic Kit (CABM00020). Exposure time: 90s.



Immunohistochemistry of paraffin-embedded rat pancreas using NELFE Rabbit pAb (CAB3249) at dilution of 1:100 (40x lens).



Immunohistochemistry of paraffin-embedded human esophageal using NELFE Rabbit pAb (CAB3249) at dilution of 1:100 (40x lens).



Immunohistochemistry of paraffin-embedded mouse testis using NELFE Rabbit pAb (CAB3249) at dilution of 1:100 (40x lens).