

RAB11A Rabbit Monoclonal Antibody



CAB3251

Product Information

Size:

20uL, 50uL, 100uL, 200uL

Observed MW:

24KDa

Calculated MW:

24kDa

Applications:

WB IF

Reactivity:

Human, Mouse, Rat

Protein Background

The protein encoded by this gene belongs to the Rab family of the small GTPase superfamily. It is associated with both constitutive and regulated secretory pathways, and may be involved in protein transport. Two transcript variants encoding different isoforms have been found for this gene. [provided by RefSeq, May 2011]

Immunogen information

Gene ID:

8766

Uniprot

P62491

Synonyms:

YL8

Antibody Information

Recommended dilutions:

WB 1:500 - 1:2000 IF 1:50 - 1:200

Source:

Rabbit

Isotype:

IgG

Purification:

Affinity purification

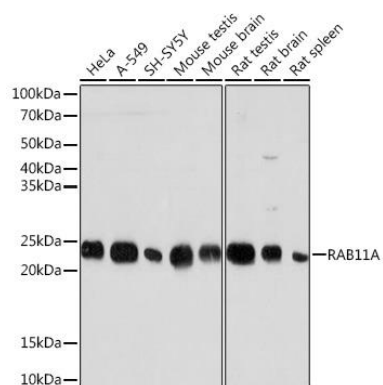
Immunogen:

A synthesized peptide derived from human RAB11A

Storage:

Store at -20°C. Avoid freeze / thaw cycles. Buffer: PBS with 0.02% sodium azide, 0.05% BSA, 50% glycerol, pH7.3.

Product Images



Western blot - RAB11A Rabbit mAb (CAB3251)