

# NPLOC4 Rabbit Polyclonal Antibody



CAB3256

---

## Product Information

### Size:

20uL, 50uL, 100uL, 200uL

### Observed MW:

70kDa

### Calculated MW:

68kDa/69kDa

### Applications:

WB IF

### Reactivity:

Human, Mouse, Rat

## Antibody Information

### Recommended dilutions:

WB 1:1000 - 1:2000 IF 1:50  
- 1:200

### Source:

Rabbit

### Isotype:

IgG

### Purification:

Affinity purification

## Protein Background

### Immunogen information

#### Gene ID:

55666

#### Uniprot

Q8TAT6

#### Synonyms:

NPLOC4; NPL4; NPL4 homolog

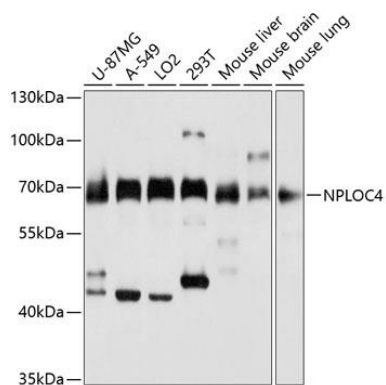
#### Immunogen:

Recombinant fusion protein containing a sequence corresponding to amino acids 1-270 of human NPLOC4 (NP\_060391.2).

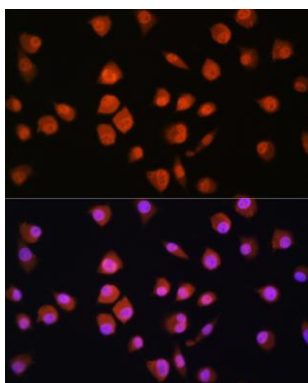
#### Storage:

Store at -20°C. Avoid freeze / thaw cycles. Buffer: PBS with 0.02% sodium azide, 50% glycerol, pH7.3.

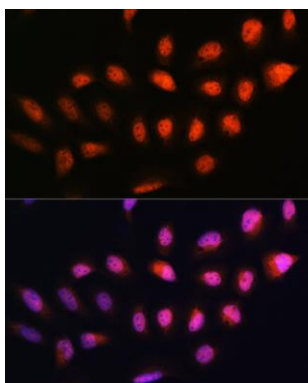
## Product Images



Western blot analysis of extracts of various cell lines, using NPLOC4 antibody (CAB3256) at 1:3000 dilution. Secondary antibody: HRP Goat Anti-Rabbit IgG (H+L) (CABS014) at 1:10000 dilution. Lysates/proteins: 25ug per lane. Blocking buffer: 3% nonfat dry milk in TBST. Detection: ECL Basic Kit (CABM00020). Exposure time: 10s.



Immunofluorescence analysis of L929 cells using NPLOC4 Rabbit pAb (CAB3256) at dilution of 1:100. Blue: DAPI for nuclear staining.



Immunofluorescence analysis of U2OS cells using NPLOC4 Rabbit pAb (CAB3256) at dilution of 1:100. Blue: DAPI for nuclear staining.