

WDR5 Rabbit Monoclonal Antibody



CAB3259

Product Information

Size:

20uL, 50uL, 100uL, 200uL

Observed MW:

37KDa

Calculated MW:

36kDa

Applications:

WB

Reactivity:

Human, Rat

Protein Background

This gene encodes a member of the WD repeat protein family. WD repeats are minimally conserved regions of approximately 40 amino acids typically bracketed by gly-his and trp-aspartic acid (GH-WD), which may facilitate formation of heterotrimeric or multiprotein complexes. Members of this family are involved in a variety of cellular processes, including cell cycle progression, signal transduction, apoptosis, and gene regulation. This protein contains 7 WD repeats. Alternatively spliced transcript variants encoding the same protein have been identified. [provided by RefSeq, Jul 2008]

Immunogen information

Gene ID:

11091

Uniprot

P61964

Synonyms:

BIG-3; CFAP89; SWD3

Antibody Information

Recommended dilutions:

WB 1:500 - 1:2000

Source:

Rabbit

Isotype:

IgG

Purification:

Affinity purification

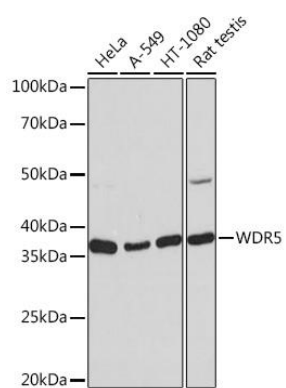
Immunogen:

A synthesized peptide derived from human WDR5

Storage:

Store at -20°C. Avoid freeze / thaw cycles. Buffer: PBS with 0.02% sodium azide, 0.05% BSA, 50% glycerol, pH7.3.

Product Images



Western blot - WDR5 Rabbit mAb (CAB3259)