

# ASK1 Rabbit Polyclonal Antibody



CAB3271

## Product Information

### Size:

20uL, 50uL, 100uL, 200uL

### Observed MW:

### Calculated MW:

69kDa/154kDa

### Applications:

IHC

### Reactivity:

Human, Rat

## Antibody Information

### Recommended dilutions:

IHC 1:50 - 1:200

### Source:

Rabbit

### Isotype:

IgG

### Purification:

Affinity purification

## Protein Background

Mitogen-activated protein kinase (MAPK) signaling cascades include MAPK or extracellular signal-regulated kinase (ERK), MAPK kinase (MKK or MEK), and MAPK kinase kinase (MAPKKK or MEKK). MAPKK kinase/MEKK phosphorylates and activates its downstream protein kinase, MAPK kinase/MEK, which in turn activates MAPK. The kinases of these signaling cascades are highly conserved, and homologs exist in yeast, Drosophila, and mammalian cells. MAPKKK5 contains 1,374 amino acids with all 11 kinase subdomains. Northern blot analysis shows that MAPKKK5 transcript is abundantly expressed in human heart and pancreas. The MAPKKK5 protein phosphorylates and activates MKK4 (aliases SERK1, MAPKK4) in vitro, and activates c-Jun N-terminal kinase (JNK)/stress-activated protein kinase (SAPK) during transient expression in COS and 293 cells; MAPKKK5 does not activate MAPK/ERK.

## Immunogen information

### Gene ID:

4217

### Uniprot

Q99683

### Synonyms:

MAP3K5; ASK1; MAPKKK5; MEKK5

### Immunogen:

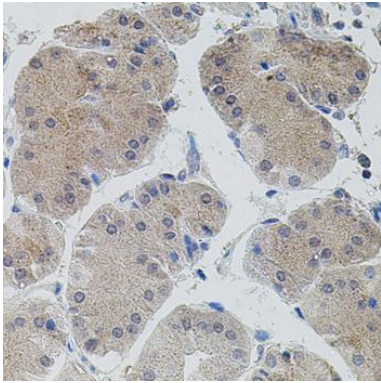
Recombinant fusion protein containing a sequence corresponding to amino acids 1173-1374 of human ASK1 (NP\_005914.1).

### Storage:

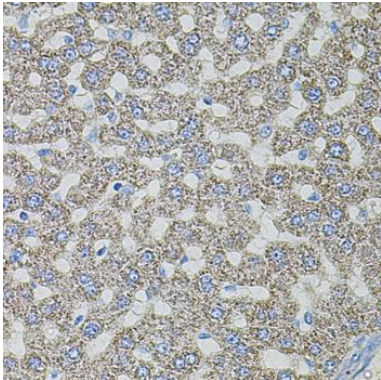
Store at -20°C. Avoid freeze / thaw cycles. Buffer: PBS with 0.02% sodium azide, 50% glycerol, pH7.3.

## Product Images

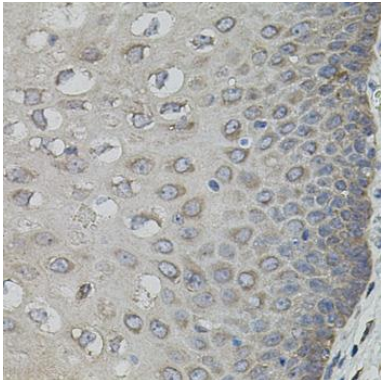
---



Immunohistochemistry of paraffin-embedded human stomach using MAP3K5 antibody (CAB3271) (40x lens).



Immunohistochemistry of paraffin-embedded rat liver using MAP3K5 antibody (CAB3271) (40x lens).



Immunohistochemistry of paraffin-embedded human esophagus using MAP3K5 antibody (CAB3271) (40x lens).