

SOS1 Rabbit Polyclonal Antibody



CAB3272

Product Information

Size:

20uL, 50uL, 100uL, 200uL

Observed MW:

175kDa/200kDa

Calculated MW:

36kDa/152kDa

Applications:

WB IF

Reactivity:

Human, Mouse, Rat

Antibody Information

Recommended dilutions:

WB 1:500 - 1:2000 IF 1:50 - 1:200

Source:

Rabbit

Isotype:

IgG

Purification:

Affinity purification

Protein Background

This gene encodes a protein that is a guanine nucleotide exchange factor for RAS proteins, membrane proteins that bind guanine nucleotides and participate in signal transduction pathways. GTP binding activates and GTP hydrolysis inactivates RAS proteins. The product of this gene may regulate RAS proteins by facilitating the exchange of GTP for GDP. Mutations in this gene are associated with gingival fibromatosis 1 and Noonan syndrome type 4.

Immunogen information

Gene ID:

6654

Uniprot

Q07889

Synonyms:

SOS1; GF1; GGF1; GINGF; HGF; NS4

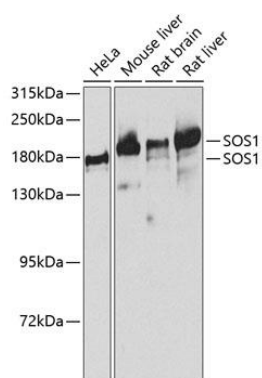
Immunogen:

Recombinant fusion protein containing a sequence corresponding to amino acids 1034-1333 of human SOS1 (NP_005624.2).

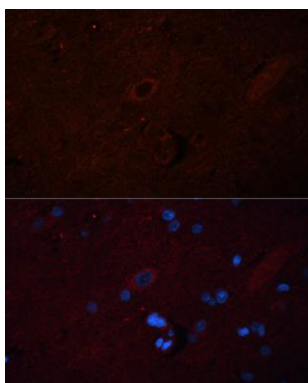
Storage:

Store at -20°C. Avoid freeze / thaw cycles. Buffer: PBS with 0.02% sodium azide, 50% glycerol, pH7.3.

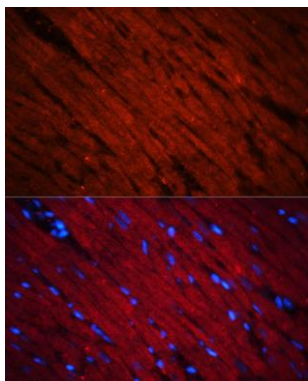
Product Images



Western blot analysis of extracts of various cell lines, using SOS1 antibody (CAB3272) at 1:1000 dilution. Secondary antibody: HRP Goat Anti-Rabbit IgG (H+L) (CABS014) at 1:10000 dilution. Lysates/proteins: 25ug per lane. Blocking buffer: 3% nonfat dry milk in TBST. Detection: ECL Basic Kit (CABM00020). Exposure time: 90s.



Immunofluorescence analysis of rat brain using SOS1 antibody (CAB3272) at dilution of 1:100 (40x lens). Blue: DAPI for nuclear staining.



Immunofluorescence analysis of rat heart using SOS1 antibody (CAB3272) at dilution of 1:100 (40x lens). Blue: DAPI for nuclear staining.