

SMO Rabbit Polyclonal Antibody



CAB3274

Product Information

Size:

20uL, 50uL, 100uL, 200uL

Observed MW:

86kDa

Calculated MW:

86kDa

Applications:

WB IHC IF

Reactivity:

Human, Mouse, Rat

Protein Background

The protein encoded by this gene is a G protein-coupled receptor that interacts with the patched protein, a receptor for hedgehog proteins. The encoded protein transduces signals to other proteins after activation by a hedgehog protein/patched protein complex.

Immunogen information

Gene ID:

6608

Uniprot

Q99835

Synonyms:

Gx; CRJS; SMOH; FZD11; SMO

Antibody Information

Recommended dilutions:

WB 1:500 - 1:2000 IHC 1:50
- 1:100 IF 1:50 - 1:100

Source:

Rabbit

Isotype:

IgG

Purification:

Affinity purification

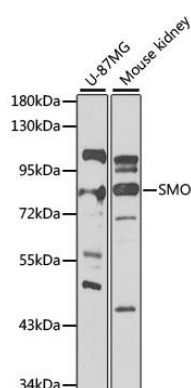
Immunogen:

Recombinant fusion protein containing a sequence corresponding to amino acids 554-787 of human SMO (NP_005622.1).

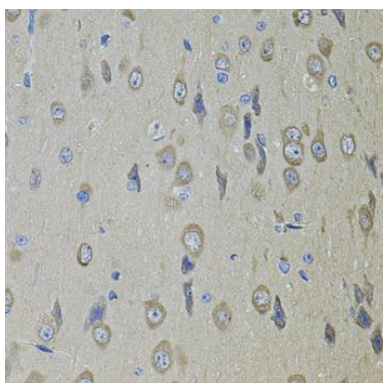
Storage:

Store at -20°C. Avoid freeze / thaw cycles. Buffer: PBS with 0.02% sodium azide, 50% glycerol, pH7.3.

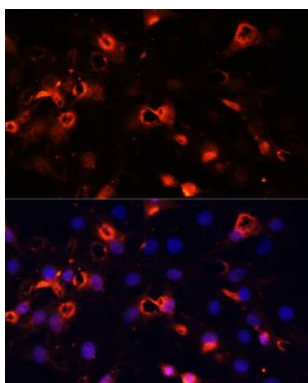
Product Images



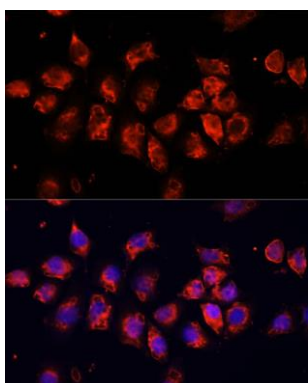
Western blot analysis of extracts of various cell lines, using SMO antibody (CAB3274) at 1:1000 dilution. Secondary antibody: HRP Goat Anti-Rabbit IgG (H+L) (CABS014) at 1:10000 dilution. Lysates/proteins: 25ug per lane. Blocking buffer: 3% nonfat dry milk in TBST. Detection: ECL Enhanced Kit (CABM00021). Exposure time: 30s.



Immunohistochemistry of paraffin-embedded rat brain using SMO antibody (CAB3274) (40x lens).



Immunofluorescence analysis of C6 cells using SMO Polyclonal Antibody (CAB3274) at dilution of 1:100 (40x lens). Blue: DAPI for nuclear staining.



Immunofluorescence analysis of HeLa cells using SMO Polyclonal Antibody (CAB3274) at dilution of 1:100 (40x lens). Blue: DAPI for nuclear staining.