

# SUV39H1 Rabbit Polyclonal Antibody



CAB3277

## Product Information

### Size:

20uL, 50uL, 100uL, 200uL

### Observed MW:

48kDa

### Calculated MW:

47kDa/49kDa

### Applications:

WB IHC IF IP ChIP

### Reactivity:

Human, Mouse, Rat

## Antibody Information

### Recommended dilutions:

WB 1:500 - 1:2000 IHC 1:50  
- 1:200 IF 1:50 - 1:200 ChIP  
1:20 - 1:100

### Source:

Rabbit

### Isotype:

IgG

### Purification:

Affinity purification

## Protein Background

This gene encodes an evolutionarily-conserved protein containing an N-terminal chromodomain and a C-terminal SET domain. The encoded protein is a histone methyltransferase that trimethylates lysine 9 of histone H3, which results in transcriptional gene silencing. Loss of function of this gene disrupts heterochromatin formation and may cause chromosome instability. Alternative splicing results in multiple transcript variants.

## Immunogen information

### Gene ID:

6839

### Uniprot

O43463

### Synonyms:

SUV39H1; H3-K9-HMTase 1; KMT1A; MG44; SUV39H; H3-K9-HMTase1

### Immunogen:

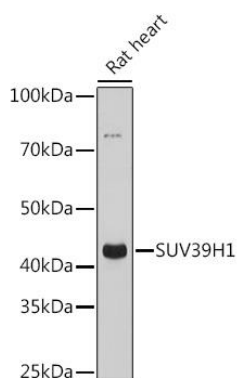
Recombinant fusion protein containing a sequence corresponding to amino acids 1-220 of human SUV39H1 (NP\_003164.1).

### Storage:

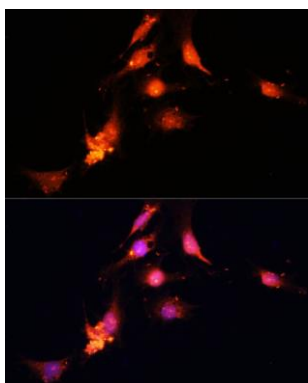
Store at -20°C. Avoid freeze / thaw cycles. Buffer: PBS with 0.02% sodium azide, 50% glycerol, pH7.3.

## Product Images

---



Western blot analysis of extracts of Rat heart, using SUV39H1 Rabbit pAb (CAB3277) at 1:1000 dilution. Secondary antibody: HRP Goat Anti-Rabbit IgG (H+L) (CABS014) at 1:10000 dilution. Lysates/proteins: 25ug per lane. Blocking buffer: 3% nonfat dry milk in TBST. Detection: ECL Basic Kit (CABM00020). Exposure time: 90s.



Immunofluorescence analysis of C6 cells using SUV39H1 Polyclonal Antibody (CAB3277) at dilution of 1:100 (40x lens). Blue: DAPI for nuclear staining.