

PAK1 Rabbit Polyclonal Antibody



CAB3279

Product Information

Size:

20uL, 50uL, 100uL, 200uL

Observed MW:

82kDa

Calculated MW:

60kDa/61kDa

Applications:

WB IHC

Reactivity:

Human, Mouse, Rat

Protein Background

This gene encodes a family member of serine/threonine p21-activating kinases, known as PAK proteins. These proteins are critical effectors that link RhoGTPases to cytoskeleton reorganization and nuclear signaling, and they serve as targets for the small GTP binding proteins Cdc42 and Rac. This specific family member regulates cell motility and morphology. Alternatively spliced transcript variants encoding different isoforms have been found for this gene.

Immunogen information

Gene ID:

5058

Uniprot

Q13153

Synonyms:

PAK1; PAKalpha

Antibody Information

Recommended dilutions:

WB 1:500 - 1:2000 IHC 1:25
- 1:100

Source:

Rabbit

Isotype:

IgG

Purification:

Affinity purification

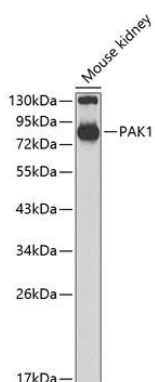
Immunogen:

A synthetic peptide of human PAK1

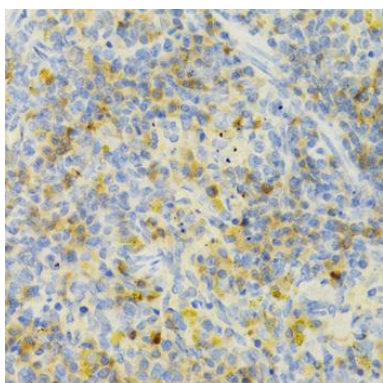
Storage:

Store at -20°C. Avoid freeze / thaw cycles. Buffer: PBS with 0.02% sodium azide, 50% glycerol, pH7.3.

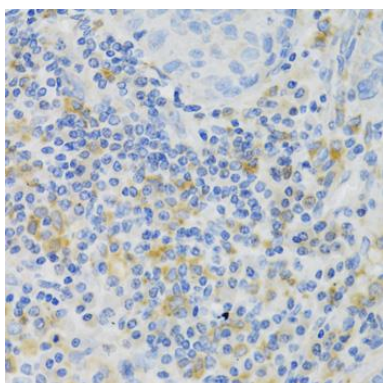
Product Images



Western blot analysis of extracts of mouse kidney, using PAK1 antibody (CAB3279) at 1:700 dilution. Secondary antibody: HRP Goat Anti-Rabbit IgG (H+L) (CABS014) at 1:10000 dilution. Lysates/proteins: 25ug per lane. Blocking buffer: 3% nonfat dry milk in TBST.



Immunohistochemistry of paraffin-embedded rat spleen using PAK1 Antibody (CAB3279) at dilution of 1:100 (40x lens).



Immunohistochemistry of paraffin-embedded human lung cancer using PAK1 Antibody (CAB3279) at dilution of 1:100 (40x lens).