

AAMP Rabbit Polyclonal Antibody



CAB3283

Product Information

Size:

20uL, 50uL, 100uL, 200uL

Observed MW:

47kDa

Calculated MW:

46kDa

Applications:

WB IF

Reactivity:

Human, Mouse, Rat

Protein Background

The gene is a member of the immunoglobulin superfamily. The encoded protein is associated with angiogenesis, with potential roles in endothelial tube formation and the migration of endothelial cells. It may also regulate smooth muscle cell migration via the RhoA pathway. The encoded protein can bind to heparin and may mediate heparin-sensitive cell adhesion.

Immunogen information

Gene ID:

14

Uniprot

Q13685

Synonyms:

AAMP

Antibody Information

Recommended dilutions:

WB 1:1000 - 1:3000 IF

1:100 - 1:200

Source:

Rabbit

Isotype:

IgG

Purification:

Affinity purification

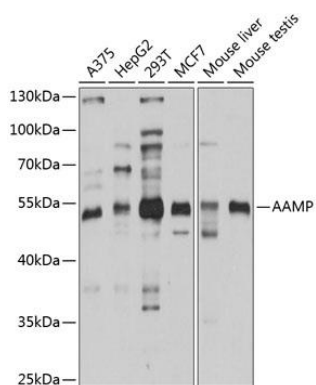
Immunogen:

Recombinant fusion protein containing a sequence corresponding to amino acids 85-434 of human AAMP (NP_001078.2).

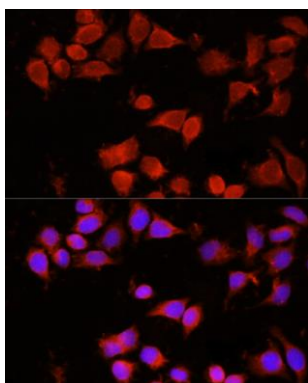
Storage:

Store at -20°C. Avoid freeze / thaw cycles. Buffer: PBS with 0.02% sodium azide, 50% glycerol, pH7.3.

Product Images



Western blot analysis of extracts of various cell lines, using AAMP antibody (CAB3283) at 1:1000 dilution. Secondary antibody: HRP Goat Anti-Rabbit IgG (H+L) (CABS014) at 1:10000 dilution. Lysates/proteins: 25ug per lane. Blocking buffer: 3% nonfat dry milk in TBST. Detection: ECL Basic Kit (CABM00020). Exposure time: 30s.



Immunofluorescence analysis of 293T cells using AAMP antibody (CAB3283) at dilution of 1:100 (40x lens). Blue: DAPI for nuclear staining.