

# KIFC1 Rabbit Polyclonal Antibody



CAB3304

## Product Information

### Size:

20uL, 50uL, 100uL, 200uL

### Observed MW:

74kDa

### Calculated MW:

73kDa

### Applications:

WB IHC IF

### Reactivity:

Human, Mouse, Rat

## Antibody Information

### Recommended dilutions:

WB 1:500 - 1:2000 IHC 1:50  
- 1:100 IF 1:50 - 1:100

### Source:

Rabbit

### Isotype:

IgG

### Purification:

Affinity purification

## Protein Background

### Immunogen information

#### Gene ID:

3833

#### Uniprot

Q9BW19

#### Synonyms:

KIFC1; HSET; KNSL2

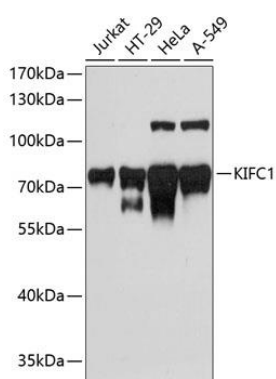
#### Immunogen:

Recombinant fusion protein containing a sequence corresponding to amino acids 1-250 of human KIFC1 (NP\_002254.2).

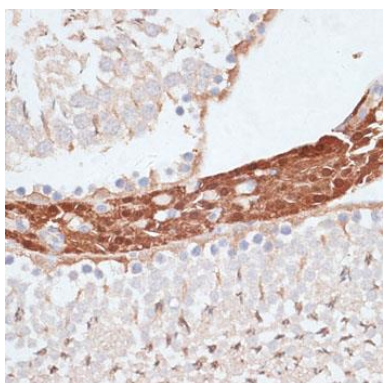
#### Storage:

Store at -20°C. Avoid freeze / thaw cycles. Buffer: PBS with 0.02% sodium azide, 50% glycerol, pH7.3.

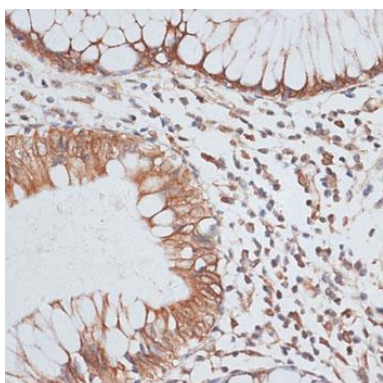
## Product Images



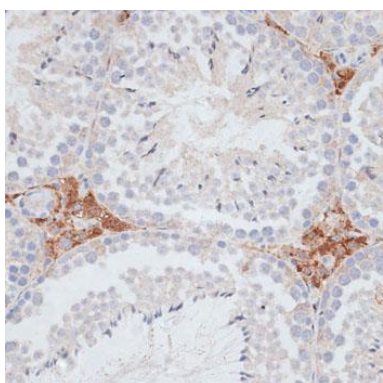
Western blot analysis of extracts of various cell lines, using KIFC1 antibody (CAB3304) at 1:3000 dilution. Secondary antibody: HRP Goat Anti-Rabbit IgG (H+L) (CABS014) at 1:10000 dilution. Lysates/proteins: 25ug per lane. Blocking buffer: 3% nonfat dry milk in TBST. Detection: ECL Basic Kit (CABM00020). Exposure time: 90s.



Immunohistochemistry of paraffin-embedded rat testis using KIFC1 antibody (CAB3304) at dilution of 1:100 (40x lens).



Immunohistochemistry of paraffin-embedded human colon carcinoma using KIFC1 antibody (CAB3304) at dilution of 1:100 (40x lens).



Immunohistochemistry of paraffin-embedded mouse testis using KIFC1 antibody (CAB3304) at dilution of 1:100 (40x lens).