

# NR3C2 Rabbit Polyclonal Antibody



CAB3308

## Product Information

### Size:

20uL, 50uL, 100uL, 200uL

### Observed MW:

100kDa

### Calculated MW:

75kDa/94kDa/107kDa

### Applications:

WB IHC IF

### Reactivity:

Human, Mouse, Rat

## Antibody Information

### Recommended dilutions:

WB 1:500 - 1:2000 IHC 1:50  
- 1:200 IF 1:50 - 1:200

### Source:

Rabbit

### Isotype:

IgG

### Purification:

Affinity purification

## Protein Background

This gene encodes the mineralocorticoid receptor, which mediates aldosterone actions on salt and water balance within restricted target cells. The protein functions as a ligand-dependent transcription factor that binds to mineralocorticoid response elements in order to transactivate target genes. Mutations in this gene cause autosomal dominant pseudohypoaldosteronism type I, a disorder characterized by urinary salt wasting. Defects in this gene are also associated with early onset hypertension with severe exacerbation in pregnancy. Alternative splicing results in multiple transcript variants.

## Immunogen information

### Gene ID:

4306

### Uniprot

P08235

### Synonyms:

NR3C2; MCR; MLR; MR; NR3C2VIT

### Immunogen:

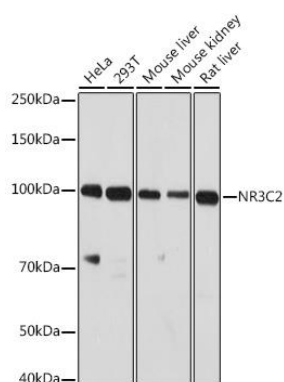
A synthetic peptide corresponding to a sequence within amino acids 800 to the C-terminus of human NR3C2 (NP\_001159576.1).

### Storage:

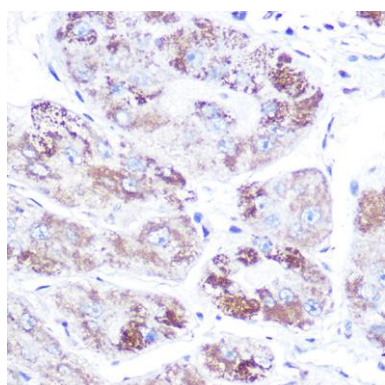
Store at -20°C. Avoid freeze / thaw cycles. Buffer: PBS with 0.02% sodium azide, 50% glycerol, pH7.3.

## Product Images

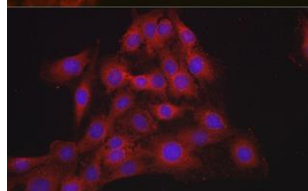
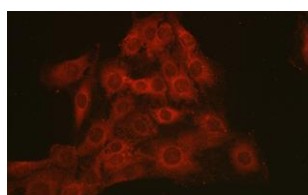
---



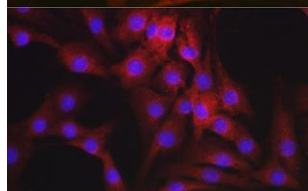
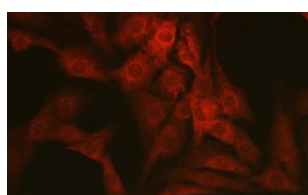
Western blot analysis of extracts of various cell lines, using NR3C2 antibody (CAB3308) at 1:1000 dilution. Secondary antibody: HRP Goat Anti-Rabbit IgG (H+L) (CABS014) at 1:10000 dilution. Lysates/proteins: 25ug per lane. Blocking buffer: 3% nonfat dry milk in TBST. Detection: ECL Enhanced Kit (RM00059). Exposure time: 90s.



Immunohistochemistry of paraffin-embedded human liver cancer using NR3C2 Rabbit pAb (CAB3308) at dilution of 1:100 (40x lens).



Immunofluorescence analysis of C6 cells using NR3C2 Rabbit pAb (CAB3308) at dilution of 1:100 (40x lens). Blue: DAPI for nuclear staining.



Immunofluorescence analysis of NIH-3T3 cells using NR3C2 Rabbit pAb (CAB3308) at dilution of 1:100 (40x lens). Blue: DAPI for nuclear staining.