

PZP Rabbit Polyclonal Antibody



CAB3324

Product Information

Size:

20uL, 50uL, 100uL, 200uL

Observed MW:

164kDa

Calculated MW:

140kDa/163kDa

Applications:

WB

Reactivity:

Human, Mouse, Rat

Antibody Information

Recommended dilutions:

WB 1:500 - 1:2000

Source:

Rabbit

Isotype:

IgG

Purification:

Affinity purification

Protein Background

The protein encoded by this gene is highly expressed in late-pregnancy serum and is similar in structure to alpha-2-macroglobulin. The encoded protein, which acts as a homotetramer, inhibits the activity of all four classes of proteinases. This protein contains cleavage sites for several proteinases. Upon binding of a proteinase, the conformation of this protein changes to trap the proteinase, limiting its activity. This protein appears to be elevated in the sera of presymptomatic Alzheimer's disease patients.

Immunogen information

Gene ID:

5858

Uniprot

P20742

Synonyms:

PZP; CPAMD6

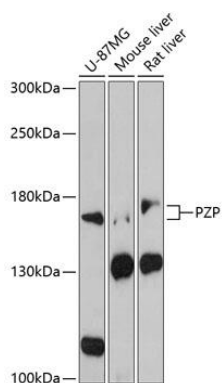
Immunogen:

Recombinant fusion protein containing a sequence corresponding to amino acids 620-740 of human PZP (NP_002855.2).

Storage:

Store at -20°C. Avoid freeze / thaw cycles. Buffer: PBS with 0.02% sodium azide, 50% glycerol, pH7.3.

Product Images



Western blot analysis of extracts of various cell lines, using PZP antibody (CAB3324) at 1:3000 dilution. Secondary antibody: HRP Goat Anti-Rabbit IgG (H+L) (CABS014) at 1:10000 dilution. Lysates/proteins: 25ug per lane. Blocking buffer: 3% nonfat dry milk in TBST. Detection: ECL Basic Kit (CABM00020). Exposure time: 90s.