

UQCRC1 Rabbit Polyclonal Antibody



CAB3339

Product Information

Size:

20uL, 50uL, 100uL, 200uL

Observed MW:

53kDa

Calculated MW:

52kDa

Applications:

WB IHC

Reactivity:

Human, Mouse, Rat

Antibody Information

Recommended dilutions:

WB 1:500 - 1:2000 IHC 1:50
- 1:200

Source:

Rabbit

Isotype:

IgG

Purification:

Affinity purification

Protein Background

Immunogen information

Gene ID:

7384

Uniprot

P31930

Synonyms:

UQCRC1; D3S3191; QCR1; UQCR1

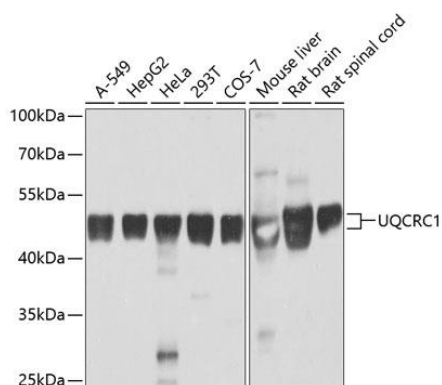
Immunogen:

Recombinant fusion protein containing a sequence corresponding to amino acids 156-480 of human UQCRC1 (NP_003356.2).

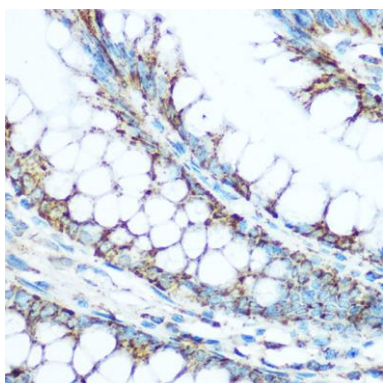
Storage:

Store at -20°C. Avoid freeze / thaw cycles. Buffer: PBS with 0.02% sodium azide, 50% glycerol, pH7.3.

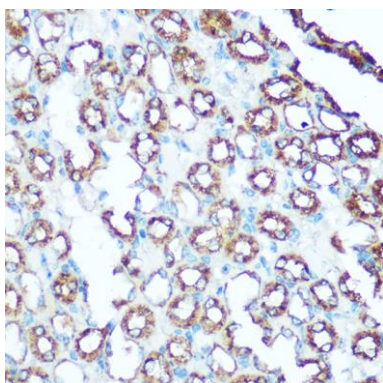
Product Images



Western blot analysis of extracts of various cell lines, using UQCRC1 antibody (CAB3339) at 1:1000 dilution. Secondary antibody: HRP Goat Anti-Rabbit IgG (H+L) (CABS014) at 1:10000 dilution. Lysates/proteins: 25ug per lane. Blocking buffer: 3% nonfat dry milk in TBST. Detection: ECL Basic Kit (CABM00020). Exposure time: 1s.



Immunohistochemistry of paraffin-embedded human colon using UQCRC1 Rabbit pAb (CAB3339) at dilution of 1:100 (40x lens).



Immunohistochemistry of paraffin-embedded mouse kidney using UQCRC1 Rabbit pAb (CAB3339) at dilution of 1:100 (40x lens).