

SLC39A7 Rabbit Polyclonal Antibody



CAB3343

Product Information

Size:

20uL, 50uL, 100uL, 200uL

Observed MW:

50kDa

Calculated MW:

50kDa

Applications:

WB IHC

Reactivity:

Human, Mouse, Rat

Protein Background

The protein encoded by this gene transports zinc from the Golgi and endoplasmic reticulum to the cytoplasm. This transport may be important for activation of tyrosine kinases, some of which could be involved in cancer progression. Therefore, modulation of the encoded protein could be useful as a therapeutic agent against cancer. Alternative splicing results in multiple transcript variants.

Immunogen information

Gene ID:

7922

Uniprot

Q92504

Synonyms:

SLC39A7; D6S115E; D6S2244E; H2-KE4; HKE4; KE4; RING5; ZIP7

Antibody Information

Recommended dilutions:

WB 1:1000 - 1:3000 IHC

1:100 - 1:200

Source:

Rabbit

Isotype:

IgG

Purification:

Affinity purification

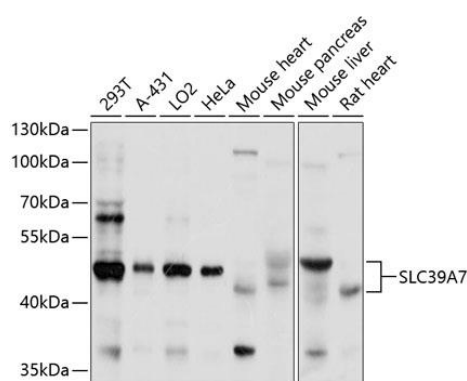
Immunogen:

Recombinant fusion protein containing a sequence corresponding to amino acids 235-380 of human SLC39A7 (NP_008910.2).

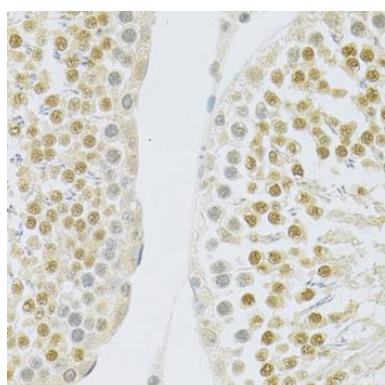
Storage:

Store at -20°C. Avoid freeze / thaw cycles. Buffer: PBS with 0.02% sodium azide, 50% glycerol, pH7.3.

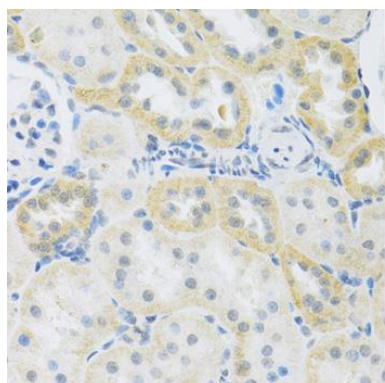
Product Images



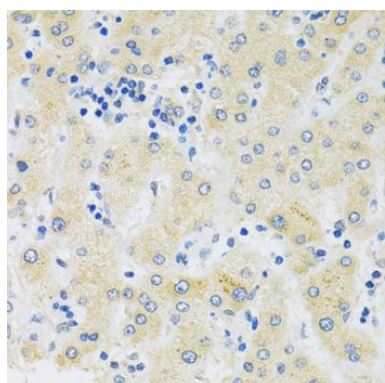
Western blot analysis of extracts of various cell lines, using SLC39A7 antibody (CAB3343) at 1:1000 dilution. Secondary antibody: HRP Goat Anti-Rabbit IgG (H+L) (CABS014) at 1:10000 dilution. Lysates/proteins: 25ug per lane. Blocking buffer: 3% nonfat dry milk in TBST. Detection: ECL Basic Kit (CABM00020). Exposure time: 20s.



Immunohistochemistry of paraffin-embedded rat testis using SLC39A7 antibody (CAB3343) at dilution of 1:100 (40x lens).



Immunohistochemistry of paraffin-embedded rat kidney using SLC39A7 antibody (CAB3343) at dilution of 1:100 (40x lens).



Immunohistochemistry of paraffin-embedded human liver using SLC39A7 antibody (CAB3343) at dilution of 1:100 (40x lens).