

# VNN1 Rabbit Polyclonal Antibody



CAB3347

---

## Product Information

### Size:

20uL, 50uL, 100uL, 200uL

### Observed MW:

60kDa

### Calculated MW:

57kDa

### Applications:

WB IF

### Reactivity:

Human, Mouse

## Antibody Information

### Recommended dilutions:

WB 1:500 - 1:2000 IF 1:50 - 1:100

### Source:

Rabbit

### Isotype:

IgG

### Purification:

Affinity purification

## Protein Background

This gene encodes a member of the vanin family of proteins, which share extensive sequence similarity with each other, and also with biotinidase. The family includes secreted and membrane-associated proteins, a few of which have been reported to participate in hematopoietic cell trafficking. No biotinidase activity has been demonstrated for any of the vanin proteins, however, they possess pantetheinase activity, which may play a role in oxidative-stress response. This protein, like its mouse homolog, is likely a GPI-anchored cell surface molecule. The mouse protein is expressed by the perivascular thymic stromal cells and regulates migration of T-cell progenitors to the thymus. This gene lies in close proximity to, and in the same transcriptional orientation as, two other vanin genes on chromosome 6q23-q24.

## Immunogen information

### Gene ID:

8876

### Uniprot

O95497

### Synonyms:

VNN1; HDLCQ8; Tiff66; vanin 1

### Immunogen:

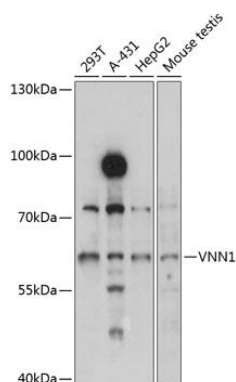
Recombinant fusion protein containing a sequence corresponding to amino acids 300-415 of human VNN1 (NP\_004657.2).

### Storage:

Store at -20°C. Avoid freeze / thaw cycles. Buffer: PBS with 0.02% sodium azide, 50% glycerol, pH7.3.

## Product Images

---



Western blot analysis of extracts of various cell lines, using VNN1 antibody (CAB3347) at 1:3000 dilution. Secondary antibody: HRP Goat Anti-Rabbit IgG (H+L) (CABS014) at 1:10000 dilution. Lysates/proteins: 25ug per lane. Blocking buffer: 3% nonfat dry milk in TBST. Detection: ECL Basic Kit (CABM00020). Exposure time: 5s.