

# Cyclin B2 Rabbit Polyclonal Antibody



CAB3351

---

## Product Information

### Size:

20uL, 50uL, 100uL, 200uL

### Observed MW:

45kDa

### Calculated MW:

45kDa

### Applications:

WB IHC

### Reactivity:

Human, Mouse, Rat

## Protein Background

Cyclin B2 is a member of the cyclin family, specifically the B-type cyclins. The B-type cyclins, B1 and B2, associate with p34cdc2 and are essential components of the cell cycle regulatory machinery. B1 and B2 differ in their subcellular localization. Cyclin B1 co-localizes with microtubules, whereas cyclin B2 is primarily associated with the Golgi region. Cyclin B2 also binds to transforming growth factor beta RII and thus cyclin B2/cdc2 may play a key role in transforming growth factor beta-mediated cell cycle control.

## Immunogen information

### Gene ID:

9133

### Uniprot

O95067

### Synonyms:

CCNB2; HsT17299; cyclin B2

## Antibody Information

### Recommended dilutions:

WB 1:500 - 1:2000 IHC

1:100 - 1:200

### Source:

Rabbit

### Isotype:

IgG

### Purification:

Affinity purification

### Immunogen:

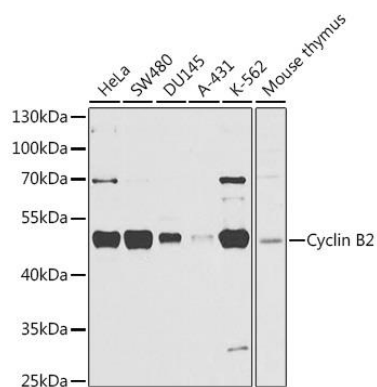
Recombinant fusion protein containing a sequence corresponding to amino acids 1-100 of human Cyclin B2 (NP\_004692.1).

### Storage:

Store at -20°C. Avoid freeze / thaw cycles. Buffer: PBS with 0.02% sodium azide, 50% glycerol, pH7.3.

## Product Images

---



Western blot analysis of extracts of various cell lines, using Cyclin B2 antibody (CAB3351) at 1:1000 dilution. Secondary antibody: HRP Goat Anti-Rabbit IgG (H+L) (CABS014) at 1:10000 dilution. Lysates/proteins: 25ug per lane. Blocking buffer: 3% nonfat dry milk in TBST. Detection: ECL Basic Kit (CABM00020). Exposure time: 30s.