

UBE4A Rabbit Polyclonal Antibody



CAB3354

Product Information

Size:

20uL, 50uL, 100uL, 200uL

Observed MW:

130kDa

Calculated MW:

122kDa/123kDa

Applications:

WB IHC

Reactivity:

Human, Mouse, Rat

Protein Background

This gene encodes a member of the U-box ubiquitin ligase family. The encoded protein is involved in multiubiquitin chain assembly and plays a critical role in chromosome condensation and separation through the polyubiquitination of securin. Autoantibodies against the encoded protein may be markers for scleroderma and Crohn's disease. A pseudogene of this gene is located on the long arm of chromosome 3. Alternatively spliced transcript variants encoding multiple isoforms have been observed for this gene.

Immunogen information

Gene ID:

9354

Uniprot

Q14139

Synonyms:

UBE4A; E4; UBOX2; UFD2

Antibody Information

Recommended dilutions:

WB 1:500 - 1:2000 IHC 1:50 - 1:200

Source:

Rabbit

Isotype:

IgG

Purification:

Affinity purification

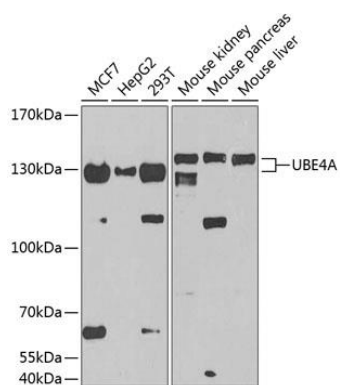
Immunogen:

Recombinant fusion protein containing a sequence corresponding to amino acids 797-1066 of human UBE4A (NP_001191006.1).

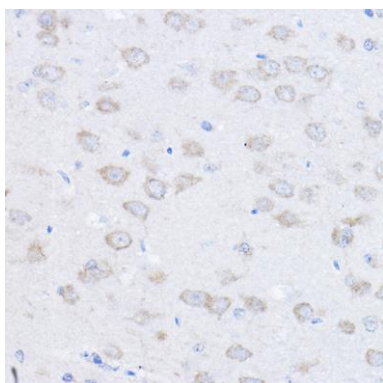
Storage:

Store at -20°C. Avoid freeze / thaw cycles. Buffer: PBS with 0.02% sodium azide, 50% glycerol, pH7.3.

Product Images



Western blot analysis of extracts of various cell lines, using UBE4A antibody (CAB3354) at 1:1000 dilution. Secondary antibody: HRP Goat Anti-Rabbit IgG (H+L) (CABS014) at 1:10000 dilution. Lysates/proteins: 25ug per lane. Blocking buffer: 3% nonfat dry milk in TBST. Detection: ECL Basic Kit (CABM00020). Exposure time: 90s.



Immunohistochemistry of paraffin-embedded rat brain using UBE4A Rabbit pAb (CAB3354) at dilution of 1:100 (40x lens).