

# LRPPRC Rabbit Polyclonal Antibody



CAB3365

---

## Product Information

### Size:

20uL, 50uL, 100uL, 200uL

### Observed MW:

130kDa

### Calculated MW:

157kDa

### Applications:

WB IHC IF

### Reactivity:

Human, Mouse, Rat

## Protein Background

This gene encodes a leucine-rich protein that has multiple pentatricopeptide repeats (PPR). The precise role of this protein is unknown but studies suggest it may play a role in cytoskeletal organization, vesicular transport, or in transcriptional regulation of both nuclear and mitochondrial genes. The protein localizes primarily to mitochondria and is predicted to have an N-terminal mitochondrial targeting sequence. Mutations in this gene are associated with the French-Canadian type of Leigh syndrome.

## Immunogen information

### Gene ID:

10128

### Uniprot

P42704

### Synonyms:

LRPPRC; CLONE-23970; GP130; LRP130; LSFC

## Antibody Information

### Recommended dilutions:

WB 1:1000 - 1:2000 IHC  
1:100 - 1:200 IF 1:100 -  
1:200

### Source:

Rabbit

### Isotype:

IgG

### Purification:

Affinity purification

### Immunogen:

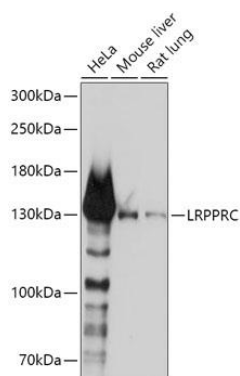
Recombinant fusion protein containing a sequence corresponding to amino acids 1041-1394 of human LRPPRC (NP\_573566.2).

### Storage:

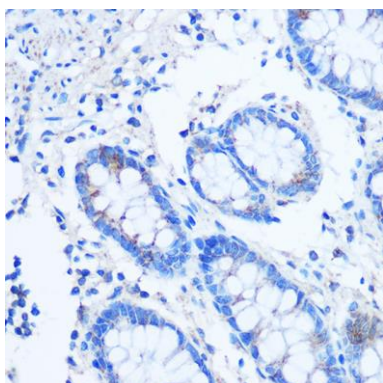
Store at -20°C. Avoid freeze / thaw cycles. Buffer: PBS with 0.02% sodium azide, 50% glycerol, pH7.3.

## Product Images

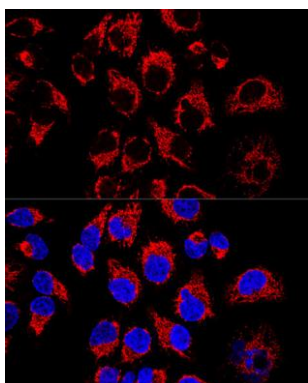
---



Western blot analysis of extracts of various cell lines, using LRPPRC antibody (CAB3365) at 1:1000 dilution. Secondary antibody: HRP Goat Anti-Rabbit IgG (H+L) (CABS014) at 1:10000 dilution. Lysates/proteins: 25ug per lane. Blocking buffer: 3% nonfat dry milk in TBST. Detection: ECL Basic Kit (CABM00020). Exposure time: 5s.



Immunohistochemistry of paraffin-embedded Human colon using LRPPRC Rabbit pAb (CAB3365) at dilution of 1:100 (40x lens).



Confocal immunofluorescence analysis of HeLa cells using LRPPRC Polyclonal Antibody (CAB3365) at dilution of 1:400. Blue: DAPI for nuclear staining.