

# ATP8A1 Rabbit Polyclonal Antibody



CAB3369

---

## Product Information

### Size:

20uL, 50uL, 100uL, 200uL

### Observed MW:

170kDa

### Calculated MW:

129kDa/131kDa

### Applications:

WB

### Reactivity:

Human, Mouse, Rat

## Protein Background

The P-type adenosinetriphosphatases (P-type ATPases) are a family of proteins which use the free energy of ATP hydrolysis to drive uphill transport of ions across membranes. Several subfamilies of P-type ATPases have been identified. One subfamily catalyzes transport of heavy metal ions. Another subfamily transports non-heavy metal ions (NMHI). The protein encoded by this gene is a member of the third subfamily of P-type ATPases and acts to transport amphipaths, such as phosphatidylserine. Two transcript variants encoding different isoforms have been found for this gene.

## Immunogen information

### Gene ID:

10396

### Uniprot

Q9Y2Q0

### Synonyms:

ATP8A1; ATPASEII; ATP1A; ATPP2

## Antibody Information

### Recommended dilutions:

WB 1:500 - 1:2000

### Source:

Rabbit

### Isotype:

IgG

### Purification:

Affinity purification

### Immunogen:

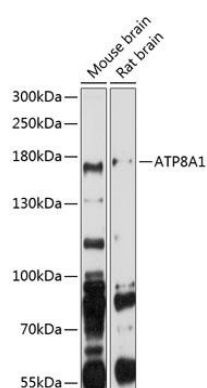
Recombinant fusion protein containing a sequence corresponding to amino acids 420-545 of human ATP8A1 (NP\_001098999.1).

### Storage:

Store at -20°C. Avoid freeze / thaw cycles. Buffer: PBS with 0.02% sodium azide, 50% glycerol, pH7.3.

## Product Images

---



Western blot analysis of extracts of various cell lines, using ATP8A1 antibody (CAB3369) at 1:1000 dilution. Secondary antibody: HRP Goat Anti-Rabbit IgG (H+L) (CABS014) at 1:10000 dilution. Lysates/proteins: 25ug per lane. Blocking buffer: 3% nonfat dry milk in TBST. Detection: ECL Basic Kit (CABM00020). Exposure time: 90s.