

# SAMM50 Rabbit Polyclonal Antibody



CAB3401

---

## Product Information

### Size:

20uL, 50uL, 100uL, 200uL

### Observed MW:

55kDa

### Calculated MW:

51kDa

### Applications:

WB IHC IP

### Reactivity:

Human, Mouse, Rat

## Protein Background

This gene encodes a component of the Sorting and Assembly Machinery (SAM) of the mitochondrial outer membrane. The Sam complex functions in the assembly of beta-barrel proteins into the outer mitochondrial membrane.

## Immunogen information

### Gene ID:

25813

### Uniprot

Q9Y512

### Synonyms:

SAMM50; CGI-51; OMP85; SAM50; TOB55; TRG-3; YNL026W

## Antibody Information

### Recommended dilutions:

WB 1:500 - 1:2000 IHC 1:50  
- 1:200 IP 1:50 - 1:200

### Source:

Rabbit

### Isotype:

IgG

### Purification:

Affinity purification

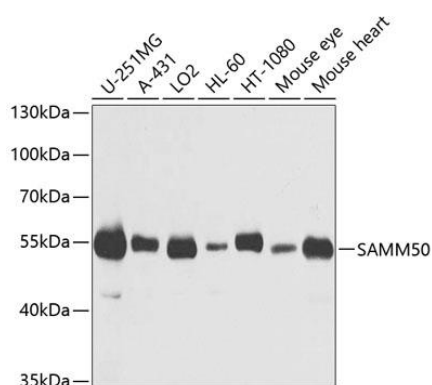
### Immunogen:

Recombinant fusion protein containing a sequence corresponding to amino acids 1-220 of human SAMM50 (NP\_056195.3).

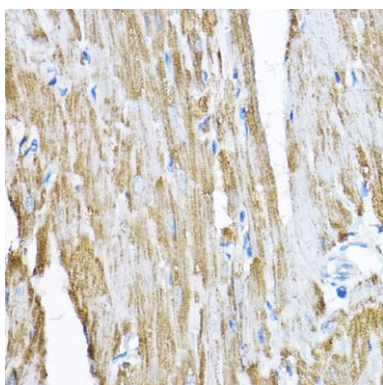
### Storage:

Store at -20°C. Avoid freeze / thaw cycles. Buffer: PBS with 0.02% sodium azide, 50% glycerol, pH7.3.

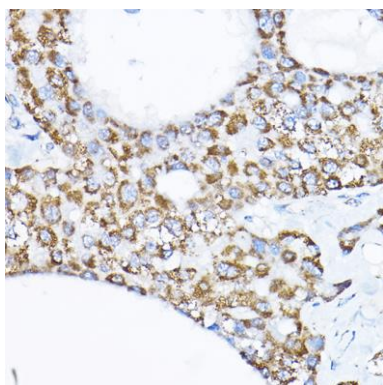
## Product Images



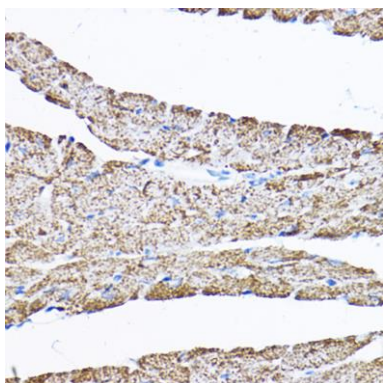
Western blot analysis of extracts of various cell lines, using SAMM50 antibody (CAB3401) at 1:1000 dilution. Secondary antibody: HRP Goat Anti-Rabbit IgG (H+L) (CABS014) at 1:10000 dilution. Lysates/proteins: 25ug per lane. Blocking buffer: 3% nonfat dry milk in TBST. Detection: ECL Basic Kit (CABM00020). Exposure time: 30s.



Immunohistochemistry of paraffin-embedded rat heart using SAMM50 Rabbit pAb (CAB3401) at dilution of 1:200 (40x lens).



Immunohistochemistry of paraffin-embedded human liver cancer using SAMM50 Rabbit pAb (CAB3401) at dilution of 1:200 (40x lens).



Immunohistochemistry of paraffin-embedded mouse heart using SAMM50 Rabbit pAb (CAB3401) at dilution of 1:200 (40x lens).