

RRM2 Rabbit Monoclonal Antibody



CAB3424

Product Information

Size:

20uL, 50uL, 100uL, 200uL

Observed MW:

45KDa

Calculated MW:

45kDa

Applications:

WB

Reactivity:

Human, Mouse, Rat

Protein Background

This gene encodes one of two non-identical subunits for ribonucleotide reductase. This reductase catalyzes the formation of deoxyribonucleotides from ribonucleotides. Synthesis of the encoded protein (M2) is regulated in a cell-cycle dependent fashion. Transcription from this gene can initiate from alternative promoters, which results in two isoforms that differ in the lengths of their N-termini. Related pseudogenes have been identified on chromosomes 1 and X. [provided by RefSeq, Sep 2009]

Immunogen information

Gene ID:

6241

Uniprot

P31350

Synonyms:

R2; RR2; RR2M

Antibody Information

Recommended dilutions:

WB 1:500 - 1:2000

Source:

Rabbit

Isotype:

IgG

Purification:

Affinity purification

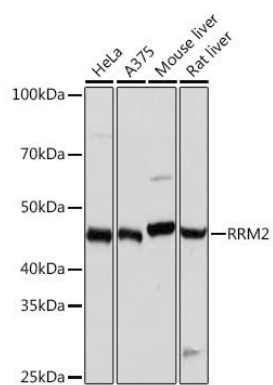
Immunogen:

A synthesized peptide derived from human RRM2

Storage:

Store at -20°C. Avoid freeze / thaw cycles. Buffer: PBS with 0.02% sodium azide, 0.05% BSA, 50% glycerol, pH7.3.

Product Images



Western blot - RRM2 Rabbit mAb (CAB3424)