

# C14orf166 Rabbit Polyclonal Antibody



CAB3436

## Product Information

### Size:

20uL, 50uL, 100uL, 200uL

### Observed MW:

25kDa/28kDa

### Calculated MW:

28kDa

### Applications:

WB IHC

### Reactivity:

Human, Mouse

## Antibody Information

### Recommended dilutions:

WB 1:500 - 1:2000 IHC 1:50  
- 1:200

### Source:

Rabbit

### Isotype:

IgG

### Purification:

Affinity purification

## Protein Background

### Immunogen information

#### Gene ID:

51637

#### Uniprot

Q9Y224

#### Synonyms:

C14orf166; CGI-99; CGI99; CLE; CLE7; LCRP369; RLLM1; hCLE1

#### Immunogen:

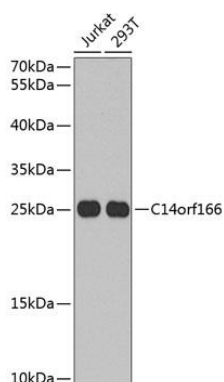
Recombinant fusion protein containing a sequence corresponding to amino acids 1-244 of human C14orf166 (NP\_057123.1).

#### Storage:

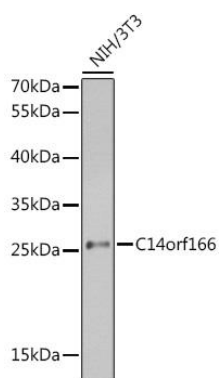
Store at -20°C. Avoid freeze / thaw cycles. Buffer: PBS with 0.02% sodium azide, 50% glycerol, pH7.3.

## Product Images

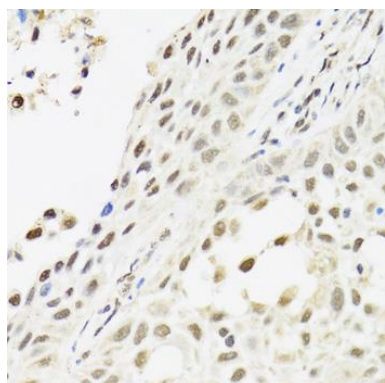
---



Western blot analysis of extracts of various cell lines, using C14orf166 antibody (CAB3436) at 1:1000 dilution. Secondary antibody: HRP Goat Anti-Rabbit IgG (H+L) (CABS014) at 1:10000 dilution. Lysates/proteins: 25ug per lane. Blocking buffer: 3% nonfat dry milk in TBST. Detection: ECL Basic Kit (CABM00020). Exposure time: 90s.



Western blot analysis of extracts of NIH/3T3 cells, using C14orf166 antibody (CAB3436) at 1:1000 dilution. Secondary antibody: HRP Goat Anti-Rabbit IgG (H+L) (CABS014) at 1:10000 dilution. Lysates/proteins: 25ug per lane. Blocking buffer: 3% nonfat dry milk in TBST. Detection: ECL Enhanced Kit (CABM00021). Exposure time: 45s.



Immunohistochemistry of paraffin-embedded human lung cancer using C14orf166 antibody (CAB3436) at dilution of 1:100 (40x lens).