

SLC39A4 Rabbit Polyclonal Antibody



CAB3454

Product Information

Size:

20uL, 50uL, 100uL, 200uL

Observed MW:

75kDa

Calculated MW:

66kDa/68kDa

Applications:

WB IHC

Reactivity:

Human, Mouse, Rat

Protein Background

This gene encodes a member of the zinc/iron-regulated transporter-like protein (ZIP) family. The encoded protein localizes to cell membranes and is required for zinc uptake in the intestine. Mutations in this gene result in acrodermatitis enteropathica. Multiple transcript variants encoding different isoforms have been found for this gene.

Immunogen information

Gene ID:

55630

Uniprot

Q6P5W5

Synonyms:

SLC39A4; AEZ; AWMS2; ZIP4

Antibody Information

Recommended dilutions:

WB 1:500 - 1:2000 IHC 1:50
- 1:100

Source:

Rabbit

Isotype:

IgG

Purification:

Affinity purification

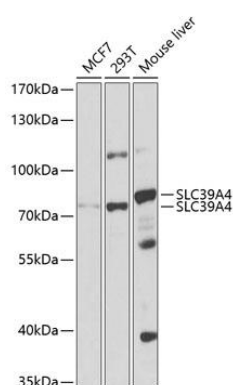
Immunogen:

Recombinant fusion protein containing a sequence corresponding to amino acids 23-327 of human SLC39A4 (NP_570901.2).

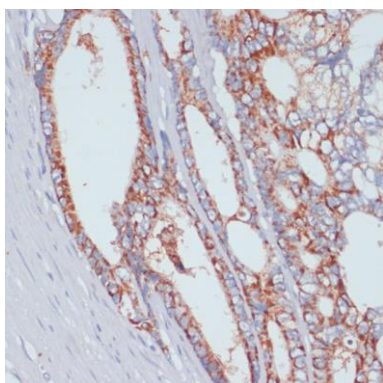
Storage:

Store at -20°C. Avoid freeze / thaw cycles. Buffer: PBS with 0.02% sodium azide, 50% glycerol, pH7.3.

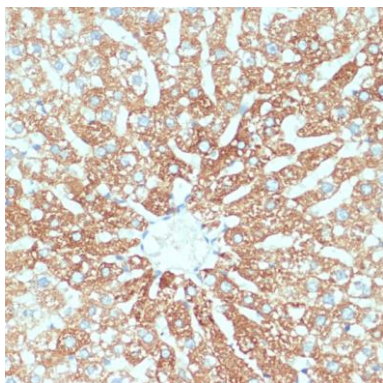
Product Images



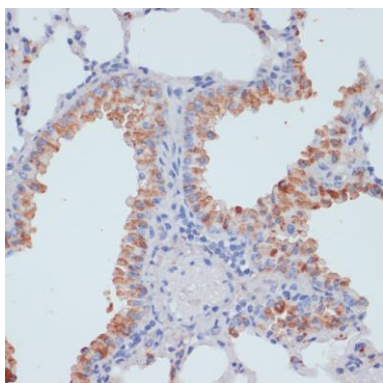
Western blot analysis of extracts of various cell lines, using SLC39A4 antibody (CAB3454) at 1:1000 dilution. Secondary antibody: HRP Goat Anti-Rabbit IgG (H+L) (CABS014) at 1:10000 dilution. Lysates/proteins: 25ug per lane. Blocking buffer: 3% nonfat dry milk in TBST. Detection: ECL Basic Kit (CABM00020). Exposure time: 90s.



Immunohistochemistry of paraffin-embedded human colon carcinoma using SLC39A4 antibody (CAB3454) at dilution of 1:100 (40x lens).



Immunohistochemistry of paraffin-embedded rat liver using SLC39A4 antibody (CAB3454) at dilution of 1:100 (40x lens).



Immunohistochemistry of paraffin-embedded mouse lung using SLC39A4 antibody (CAB3454) at dilution of 1:100 (40x lens).