

# IKKε Rabbit Monoclonal Antibody



CAB3463

## Product Information

### Size:

20uL, 50uL, 100uL, 200uL

### Observed MW:

80KDa

### Calculated MW:

80kDa

### Applications:

WB IHC

### Reactivity:

Human, Mouse, Rat

## Protein Background

IKBKE is a noncanonical I-kappa-B (see MIM 164008) kinase (IKK) that is essential for regulating antiviral signaling pathways. IKBKE has also been identified as a breast cancer (MIM 114480) oncogene and is amplified and overexpressed in over 30% of breast carcinomas and breast cancer cell lines (Hutti et al., 2009 [PubMed 19481526]).[supplied by OMIM, Oct 2009]

## Immunogen information

### Gene ID:

9641

### Uniprot

Q14164

### Synonyms:

IKK-E; IKK-i; IKKE; IKKI

## Antibody Information

### Recommended dilutions:

WB 1:500 - 1:2000 IHC

1:50 - 1:200

### Source:

Rabbit

### Isotype:

IgG

### Purification:

Affinity purification

### Immunogen:

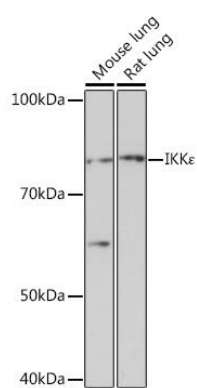
A synthesized peptide derived from human IKKε

### Storage:

Store at -20°C. Avoid freeze / thaw cycles. Buffer: PBS with 0.02% sodium azide, 0.05% BSA, 50% glycerol, pH7.3.

## Product Images

---



Western blot - IKKepsilon Rabbit mAb (CAB3463)