

PEDF Rabbit Monoclonal Antibody



CAB3475

Product Information

Size:

20uL, 50uL, 100uL, 200uL

Observed MW:

46KDa

Calculated MW:

46kDa

Applications:

WB

Reactivity:

Human, Mouse, Rat

Protein Background

This gene encodes a member of the serpin family that does not display the serine protease inhibitory activity shown by many of the other serpin proteins. The encoded protein is secreted and strongly inhibits angiogenesis. In addition, this protein is a neurotrophic factor involved in neuronal differentiation in retinoblastoma cells. Mutations in this gene were found in individuals with osteogenesis imperfecta, type VI. [provided by RefSeq, Aug 2016]

Immunogen information

Gene ID:

5176

Uniprot

P36955

Synonyms:

EPC-1; OI12; OI6; PEDF; PIG35

Antibody Information

Recommended dilutions:

WB 1:500 - 1:2000

Source:

Rabbit

Isotype:

IgG

Purification:

Affinity purification

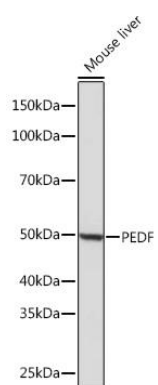
Immunogen:

A synthesized peptide derived from human PEDF

Storage:

Store at -20°C. Avoid freeze / thaw cycles. Buffer: PBS with 0.02% sodium azide, 0.05% BSA, 50% glycerol, pH7.3.

Product Images



Western blot - PEDF Rabbit mAb (CAB3475)