

# ANAPC1 Rabbit Polyclonal Antibody



CAB3484

---

## Product Information

### Size:

20uL, 50uL, 100uL, 200uL

### Observed MW:

216kDa

### Calculated MW:

216kDa

### Applications:

WB

### Reactivity:

Human

## Protein Background

This gene encodes a subunit of the anaphase-promoting complex. This complex is an E3 ubiquitin ligase that regulates progression through the metaphase to anaphase portion of the cell cycle by ubiquitinating proteins which targets them for degradation.

## Immunogen information

### Gene ID:

64682

### Uniprot

Q9H1A4

### Synonyms:

ANAPC1; APC1; MCPR; TSG24

## Antibody Information

### Recommended dilutions:

WB 1:1000 - 1:2000

### Source:

Rabbit

### Isotype:

IgG

### Purification:

Affinity purification

### Immunogen:

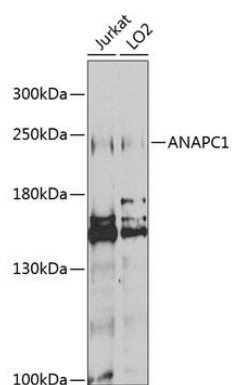
Recombinant fusion protein containing a sequence corresponding to amino acids 1-250 of human ANAPC1 (NP\_073153.1).

### Storage:

Store at -20°C. Avoid freeze / thaw cycles. Buffer: PBS with 0.02% sodium azide, 50% glycerol, pH7.3.

## Product Images

---



Western blot analysis of extracts of various cell lines, using ANAPC1 antibody (CAB3484) at 1:1000 dilution. Secondary antibody: HRP Goat Anti-Rabbit IgG (H+L) (CABS014) at 1:10000 dilution. Lysates/proteins: 25ug per lane. Blocking buffer: 3% nonfat dry milk in TBST. Detection: ECL Enhanced Kit (CABM00021). Exposure time: 90s.