

# SFPQ Rabbit Monoclonal Antibody



CAB3494

---

## Product Information

### Size:

20uL, 50uL, 100uL, 200uL

### Observed MW:

### Calculated MW:

100kDa

### Applications:

IHC IF

### Reactivity:

Human, Mouse, Rat

## Antibody Information

### Recommended dilutions:

IHC 1:50 - 1:200 IF 1:50 - 1:200

### Source:

Rabbit

### Isotype:

IgG

### Purification:

Affinity purification

## Protein Background

### Immunogen information

#### Gene ID:

6421

#### Uniprot

P23246

#### Synonyms:

POMP100; PPP1R140; PSF

#### Immunogen:

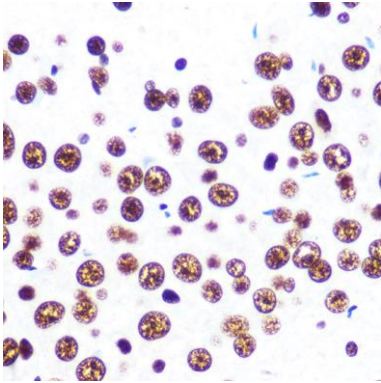
A synthesized peptide derived from human SFPQ

#### Storage:

Store at -20°C. Avoid freeze / thaw cycles. Buffer: PBS with 0.02% sodium azide, 0.05% BSA, 50% glycerol, pH7.3.

## Product Images

---



Immunohistochemistry - SFPQ Rabbit mAb (CAB3494)