

SIRT6 Rabbit Monoclonal Antibody



CAB3591

Product Information

Size:

20uL, 50uL, 100uL, 200uL

Observed MW:

40kDa

Calculated MW:

39kDa

Applications:

WB

Reactivity:

Human

Protein Background

This gene encodes a member of the sirtuin family of NAD-dependent enzymes that are implicated in cellular stress resistance, genomic stability, aging and energy homeostasis. The encoded protein is localized to the nucleus, exhibits ADP-ribosyl transferase and histone deacetylase activities, and plays a role in DNA repair, maintenance of telomeric chromatin, inflammation, lipid and glucose metabolism. Alternative splicing results in multiple transcript variants encoding different isoforms. [provided by RefSeq, Mar 2016]

Immunogen information

Gene ID:

51548

Uniprot

Q8N6T7

Synonyms:

SIR2L6

Antibody Information

Recommended dilutions:

WB 1:500 - 1:2000

Source:

Rabbit

Isotype:

IgG

Purification:

Affinity purification

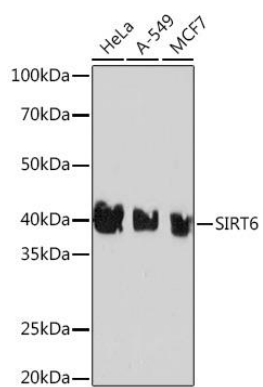
Immunogen:

A synthesized peptide derived from human SIRT6

Storage:

Store at -20°C. Avoid freeze / thaw cycles. Buffer: PBS with 0.02% sodium azide, 0.05% BSA, 50% glycerol, pH7.3.

Product Images



Western blot - SIRT6 Rabbit mAb (CAB3591)