

[KO Validated] CSPG4 Rabbit Polyclonal Antibody



CAB3592

Product Information

Size:

20uL, 50uL, 100uL, 200uL

Observed MW:

320kDa

Calculated MW:

250kDa

Applications:

WB IHC IF

Reactivity:

Human, Mouse, Rat

Protein Background

A human melanoma-associated chondroitin sulfate proteoglycan plays a role in stabilizing cell-substratum interactions during early events of melanoma cell spreading on endothelial basement membranes. CSPG4 represents an integral membrane chondroitin sulfate proteoglycan expressed by human malignant melanoma cells.

Immunogen information

Gene ID:

1464

Uniprot

Q6UVK1

Synonyms:

CSPG4; HMW-MAA; MCSP; MCSPG; MEL-CSPG; MSK16; NG2

Antibody Information

Recommended dilutions:

WB 1:500 - 1:2000 IHC 1:50
- 1:200 IF 1:50 - 1:200

Source:

Rabbit

Isotype:

IgG

Purification:

Affinity purification

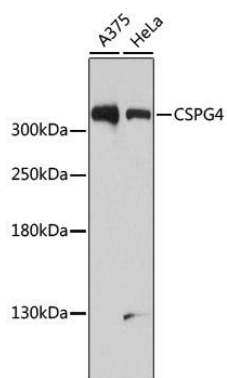
Immunogen:

Recombinant fusion protein containing a sequence corresponding to amino acids 1950-2210 of human CSPG4 (NP_001888.2).

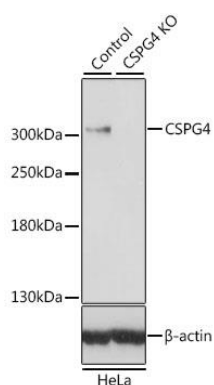
Storage:

Store at -20°C. Avoid freeze / thaw cycles. Buffer: PBS with 0.02% sodium azide, 50% glycerol, pH7.3.

Product Images



Western blot analysis of extracts of various cell lines, using CSPG4 antibody (CAB3592) at 1:1000 dilution. Secondary antibody: HRP Goat Anti-Rabbit IgG (H+L) (CABS014) at 1:10000 dilution. Lysates/proteins: 25ug per lane. Blocking buffer: 3% nonfat dry milk in TBST. Detection: ECL Basic Kit (CABM00020). Exposure time: 90s.



Western blot analysis of extracts from normal (control) and CSPG4 knockout (KO) HeLa cells, using CSPG4 antibody (CAB3592) at 1:500 dilution. Secondary antibody: HRP Goat Anti-Rabbit IgG (H+L) (CABS014) at 1:10000 dilution. Lysates/proteins: 25ug per lane. Blocking buffer: 3% nonfat dry milk in TBST. Detection: ECL Basic Kit (CABM00020). Exposure time: 10s.