

PLS3 Rabbit Polyclonal Antibody



CAB3627

Product Information

Size:

20uL, 50uL, 100uL, 200uL

Observed MW:

71kDa

Calculated MW:

65kDa/69kDa/70kDa

Applications:

WB IHC IP

Reactivity:

Human, Mouse, Rat

Antibody Information

Recommended dilutions:

WB 1:200 - 1:2000 IHC 1:50
- 1:100 IP 1:50 - 1:100

Source:

Rabbit

Isotype:

IgG

Purification:

Affinity purification

Protein Background

Plastins are a family of actin-binding proteins that are conserved throughout eukaryote evolution and expressed in most tissues of higher eukaryotes. In humans, two ubiquitous plastin isoforms (L and T) have been identified. Plastin 1 (otherwise known as Fimbrin) is a third distinct plastin isoform which is specifically expressed at high levels in the small intestine. The L isoform is expressed only in hemopoietic cell lineages, while the T isoform has been found in all other normal cells of solid tissues that have replicative potential (fibroblasts, endothelial cells, epithelial cells, melanocytes, etc.). The C-terminal 570 amino acids of the T-plastin and L-plastin proteins are 83% identical. It contains a potential calcium-binding site near the N terminus. Alternate splicing results in multiple transcript variants.

Immunogen information

Gene ID:

5358

Uniprot

P13797

Synonyms:

PLS3; BMND18; T-plastin; plastin-3

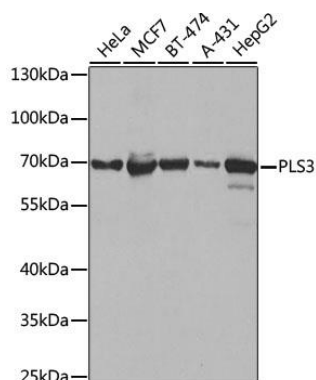
Immunogen:

Recombinant fusion protein containing a sequence corresponding to amino acids 1-240 of human PLS3 (NP_005023.2).

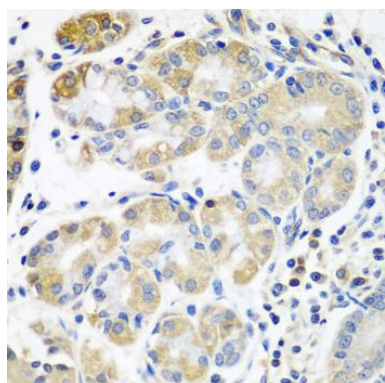
Storage:

Store at -20°C. Avoid freeze / thaw cycles. Buffer: PBS with 0.02% sodium azide, 50% glycerol, pH7.3.

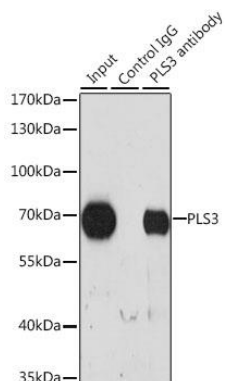
Product Images



Western blot analysis of extracts of various cell lines, using PLS3 antibody (CAB3627) at 1:1000 dilution. Secondary antibody: HRP Goat Anti-Rabbit IgG (H+L) (CABS014) at 1:10000 dilution. Lysates/proteins: 25ug per lane. Blocking buffer: 3% nonfat dry milk in TBST. Detection: ECL Basic Kit (CABM00020). Exposure time: 10s.



Immunohistochemistry of paraffin-embedded human stomach using PLS3 antibody (CAB3627) at dilution of 1:100 (40x lens).



Immunoprecipitation analysis of 200ug extracts of HeLa cells, using 3 ug PLS3 antibody (CAB3627). Western blot was performed from the immunoprecipitate using PLS3 antibody (CAB3627) at a dilution of 1:1000.